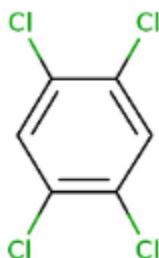


### 1. General Statements

1,2,4,5-Tetra Chloro Benzene is crystalline solid which is a characteristic odour. It is White to grey-brown in colour. It is Combustible substance, poorly flammable. Very slightly soluble in water. Sensitive to light. Acute or chronic health hazards result from the substance. The substance is hazardous to the aquatic environment.

### 2. Chemical identification.

Name : 1,2,4,5-Tetra Chloro Benzene  
 CAS number(s) : 95-94-3  
 EC number : 202-466-2  
 Molecular formula : C<sub>6</sub>H<sub>2</sub>Cl<sub>4</sub>  
 Structure :



### 3. Uses and Benefits

It is used as an Intermediate for herbicides and defoliants, impregnant for moisture resistance, electrical insulator, insecticide. Metabolite of hexachlorobenzene - found in human adipose tissue.

### 4. Physical / chemical properties

Property	Value
Physical state :	Solid
Colour :	Colourless to light grey
Odour :	Odourless
pH :	7.1 (0.08 %)
Melting point :	139-142°C
Boiling point :	240-246°C
Flash point :	155 °C
Density :	1858 kg/m <sup>3</sup>
Solubility in Water:	0.03 g/100ml

## GPS Safety Summary

### 1,2,4,5-Tetra Chloro Benzene

CL-4:PUBLIC

#### 5. Health Effects

Effect Assessment	Result
Acute toxicity (Oral / inhalation / dermal )	Harmful if swallowed
Irritation / corrosion Skin / eye/ respiratory tract	NA
Respiratory or skin sensitisation	May cause an allergic skin reaction
Toxicity after repeated exposure Oral / inhalation / dermal	NA
Genotoxicity / Mutagenicity	NA
Carcinogenicity	NA
Toxicity for reproduction	NA

#### 6. Environmental Effects

Effect Assessment	Result
Aquatic toxicity	No
Fate and behavior	Result
Persistence and degradability	Not readily biodegradable in water.
Bioaccumulative potential	High potential for bioaccumulation (BCF > 5000).

#### 7. Exposure

##### Human health

1,2,4,5-Tetra Chloro Benzene Harmful if swallowed May cause an allergic skin reaction. But the exposure must be kept as minimum as possible by the use of appropriate risk management measures suitable collective and personal protective equipment, good industrial hygiene practices and risk communication through appropriate training of workers. Careless handling or accidental spillage of the chemical could result in exposure to potentially hazardous levels of chemicals. Industrial workers should ensure that they follow the advice found in the extended safety data sheet (SDS).

##### Environment:

Care should be taken to avoid releases of these products to sewage, drainage systems and water bodies. Spillage shall be quickly collected in the event of an accidental release. More information about release measures and accidental release measures are available in the extended safety data sheet.

# GPS Safety Summary

## 1,2,4,5-Tetra Chloro Benzene

CL-4:PUBLIC

### 8. Risk Management Recommendations

#### Human health measures

Organizational	A basic standard of occupational hygiene is recommended. Ensure operatives are well informed of the hazards and trained to minimise exposures. Ensure regular inspection and maintenance of equipment and machines. Handle and store according to the indications of the Safety Data Sheet.	
Protection	Eye protection:	Safety glasses (EN 166). In case of dust production: protective goggles (EN 166)
	Skin and body protection:	Protective clothing (EN 14605 or EN 13034)
	Respiratory protection:	Dust formation: dust mask. On heating: Full face mask with filter type A
Engineering controls	Ensure good ventilation of the work station.	
Environment protective measures		
Avoid release to the environment		

### 9. First-aid measures

**First-aid measures after inhalation:**Remove the victim into fresh air.

**First-aid measures after skin contact:**Soap may be used. Do not apply (chemical) neutralizing agents without medical advice. Remove clothing while washing.

**First-aid measures after eye contact:**Rinse immediately with plenty of water for 15 minutes. Remove contact lenses, if present and easy to do. Continue rinsing. Do not apply (chemical) neutralizing agents without medical advice.

**First-aid measures after ingestion :**Rinse mouth with water. Immediately after ingestion: give lots of water to drink. Ingestion of large quantities: immediately to hospital. Call Poison Information Centre ([www.big.be/antigif.html](http://www.big.be/antigif.html)).

### 10. Fire-fighting measures

#### Extinguishing media

**Suitable extinguishing media:**Quick-acting ABC powder extinguisher. Class A foam extinguisher. Water (quick-acting extinguisher, reel). Water. Class A foam.

**Unsuitable extinguishing media :**Quick-acting BC powder extinguisher. Quick-acting CO2 extinguisher.

# GPS Safety Summary

## 1,2,4,5-Tetra Chloro Benzene

CL-4:PUBLIC

---

### Special hazards arising from the substance or mixture

**Hazardous decomposition products in case of fire:** On burning: release of toxic and corrosive gases/vapours (phosgene, hydrogen chloride, carbon monoxide - carbon dioxide).

### Advice for firefighters

**Precautionary measures fire:** Exposure to fire/heat: keep upwind. Exposure to fire/heat: consider evacuation. Exposure to fire/heat: have neighbourhood close doors and windows.

**Firefighting instructions:** Dilute toxic gases with water spray. Take account of toxic fire-fighting water. Use water moderately and if possible collect or contain it.

### 11. Accidental release measures

**Protective equipment :** Gloves (EN 374). Safety glasses (EN 166). Protective clothing (EN 14605 or EN 13034). Dust cloud production: self-contained breathing apparatus (EN 136 + EN 137).

**Environmental precautions:** Prevent soil and water pollution. Prevent spreading in sewers.

**For containment :** Contain released product, collect/pump into suitable containers. Plug the leak, cut off the supply. Dam up the solid spill. Knock down/dilute dust clouds with water spray. Powdered form: no compressed air for pumping over spills.

### 12. Disposal consideration

**Regional legislation (waste) :** Disposal must be done according to official regulations.

**Waste treatment methods :** Dispose of contents/container in accordance with licensed collector's sorting instructions.

**Sewage disposal recommendations :** Disposal must be done according to official regulations.

### 13. Handling and storage

**Precautions for safe handling:** Avoid raising dust. Keep away from naked flames/heat. In a finely divided state: use spark- /explosionproof appliances. Finely divided: keep away from ignition sources/sparks. Measure the concentration in the air regularly. Carry operations in the open/under local exhaust/ventilation or with respiratory protection. Comply with the legal requirements. Clean contaminated clothing. Thoroughly clean/dry the installation before use. Do not discharge the waste into the drain. Powdered form: no compressed air for pumping over. Keep the container tightly closed.

**Hygiene measures:** Observe normal hygiene standards.

# GPS Safety Summary

## 1,2,4,5-Tetra Chloro Benzene

CL-4:PUBLIC

---

### 14. Classification and Labeling

Hazard pictograms (GHS US)

:



Signal word (GHS US)

: Warning

Hazard statements (GHS US)

: H302 - Harmful if swallowed

H317 - May cause an allergic skin reaction

Precautionary statements (GHS US)

: P261 - Avoid breathing dust/fume/gas/mist/vapors/spray.

P264 - Wash hands, forearms and face thoroughly after handling.

P270 - Do not eat, drink or smoke when using this product.

P272 - Contaminated work clothing must not be allowed out of the workplace.

P280 - Wear protective gloves/protective clothing/eye protection/face protection.

P301+P312 - If swallowed: Call a poison center or doctor if you feel unwell.

P302+P352 - If on skin: Wash with plenty of water.

P321 - Specific treatment (see supplemental first aid instruction on this label).

P330 - Rinse mouth.

P333+P313 - If skin irritation or rash occurs: Get medical advice/attention.

P363 - Wash contaminated clothing before reuse.

P501 - Dispose of contents/container to hazardous or special waste collection point, in accordance with local, regional, national and/or international regulation.

### 15. Conclusion

1,2,4,5-Tetra Chloro Benzene is crystalline solid which is a characteristic odour. It is White to grey-brown in colour. It is a combustible substance, poorly flammable. Very slightly soluble in water. Sensitive to light. Acute or chronic health hazards result from the substance. The substance is hazardous to the aquatic environment. The substance is hazardous to the aquatic environment. There is a risk of a dust explosion if the following conditions are met: The substance is given in very finely distributed form (powder, dust). The substance is whirled up in sufficient quantity in the air. An ignition source is present (flame, spark, electrostatic discharge, etc.) The exposure must be kept as minimum as possible by the use of appropriate risk management measures as suitable collective and personal protective equipment, good industrial hygiene practices and risk communication through appropriate training of workers.

### 16. Contact Information within company

#### **Manufacturer**

Aarti Industries Limited

Udyog Kshetra, 2nd Floor, Mulund Goregaon Link Road, Mulund (West)

400080 Mumbai - India

T +91-22-6797-6666 - F +91-22-2565 3234

info@aarti-industries.com - www.aarti-industries.com

This GPS safety summary is intended to give general information about the health, safety and environment and not intended to provide in-depth details. To obtain the most accurate and current

## **GPS Safety Summary**

### **1,2,4,5-Tetra Chloro Benzene**

**CL-4:PUBLIC**

---

information, consult the appropriate Safety Data Sheet (SDS) prior to use of the material named herein.