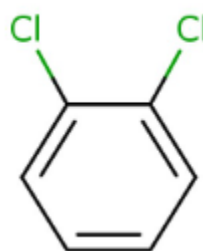


1. General Statements

1,2-Dichlorobenzene is Colourless to light Yellow liquid. It is disagreeable odour. It is a Combustible substance, poorly flammable (flash point > 60 up to 93 °C). Vapours may form explosive mixtures with air when the substance is heated above its flash point. Practically insoluble in water. Heavier than water. Very low-volatile. Acute or chronic health hazards result from the substance. The substance is hazardous to the aquatic environment.

2. Chemical identification.

Name : 1,2-Dichlorobenzene
CAS number(s) : 95-50-1
EC number : 202-425-9
Molecular formula : C₆H₄Cl₂
Structure :



3. Uses and Benefits

It is used as a Solvent for oils, resins, waxes, gums, tars, rubbers, asphalts, oxides of nonferrous metals. Has been used as heat transfer media. Components of dyes, metal polishes, degreasers for leather, metals and wool. Used as an insecticide and fumigant; industrial odour control. Solvent.

4. Physical / chemical properties

Property	Value
Physical state :	Liquid
Colour :	Colourless to light Yellow
Odour :	disagreeable odour
pH :	NA
Melting point :	-17.03 °C
Boiling point :	180.5 °C Atm. press: 1 013.25 hPa
Flash point :	66 °C (Closed cup)
Density :	1.32 g/cm ³ at 20 °C
Solubility in Water:	0.016 g/100ml

GPS Safety Summary

1,2-Dichlorobenzene

CL-4:PUBLIC

5. Health Effects

Effect Assessment	Result
Acute toxicity (Oral / inhalation / dermal)	Harmful if swallowed,
Irritation / corrosion Skin / eye/ respiratory tract	Causes skin irritation,Causes serious eye irritation,May cause respiratory irritation
Respiratory or skin sensitisation	NA
Toxicity after repeated exposure Oral / inhalation / dermal	NA
Genotoxicity / Mutagenicity	NA
Carcinogenicity	NA
Toxicity for reproduction	NA

6. Environmental Effects

Effect Assessment	Result
Aquatic toxicity	Yes
Fate and behavior	Result
Persistence and degradability	Non degradable in the soil. Not readily biodegradable in water.
Bioaccumulative potential	Low potential for bioaccumulation (BCF < 500).

7. Exposure

Human health

1,2-Dichlorobenzene is toxic if swallowed,Causes skin irritation,Causes serious eye irritation,May cause respiratory irritation. The exposure must be kept as minimum as possible by the use of appropriate risk management measures suitable collective and personal protective equipment, good industrial hygiene practices and risk communication through appropriate training of workers.Careless handling or accidental spillage of the chemical could result in exposure to potentially hazardous levels of chemicals.Industrial workers should ensure that they follow the advice found in the extended safety data sheet (SDS).

Environment:

Care should be taken to avoid releases of these products to sewage, drainage systems and water bodies. Spillage shall be quickly collected in the event of an accidental release. More information about release measures and accidental release measures are available in the extended safety data sheet.

GPS Safety Summary

1,2-Dichlorobenzene

CL-4:PUBLIC

8. Risk Management Recommendations

Human health measures

Organizational	A basic standard of occupational hygiene is recommended. Ensure operatives are well informed of the hazards and trained to minimise exposures. Ensure regular inspection and maintenance of equipment and machines. Handle and store according to the indications of the Safety Data Sheet.	
Protection	Eye protection:	Safety glasses
	Skin and body protection:	Wear suitable protective clothing
	Respiratory protection:	In case of insufficient ventilation, wear suitable respiratory equipment.
Engineering controls	Ensure good ventilation of the work station.	
Environment protective measures		
Avoid release to the environment		

9. First-aid measures

First-aid measures after inhalation: Remove the person to fresh air and keep them comfortable for breathing. Call a poison center or a doctor if you feel unwell.

First-aid measures after skin contact: Wash skin with plenty of water. Take off contaminated clothing. If skin irritation occurs: Get medical advice/attention.

First-aid measures after eye contact: Rinse cautiously with water for several minutes. Remove contact lenses, if present and easy to do. Continue rinsing. If eye irritation persists: Get medical advice/attention.

First-aid measures after ingestion : Rinse mouth. Call a poison center or a doctor if you feel unwell.

10. Fire-fighting measures

Extinguishing media

Suitable extinguishing media: Water spray. Dry powder. Foam. Carbon dioxide.

Unsuitable extinguishing media : Water (quick-acting extinguisher, reel); risk of puddle expansion. Water; risk of puddle expansion.

Special hazards arising from the substance or mixture

Hazardous decomposition products in case of fire: On burning: release of toxic and corrosive gases/vapours (chlorine, hydrogen chloride, phosgene, carbon monoxide - carbon dioxide).

GPS Safety Summary

1,2-Dichlorobenzene

CL-4:PUBLIC

Advice for firefighters

Precautionary measures fire: Exposure to fire/heat: keep upwind. Exposure to fire/heat: consider evacuation. Exposure to fire/heat: seal off low-lying areas. Exposure to fire/heat: have neighbourhood close doors and windows.

Firefighting instructions: Fight fire from safe distance and protected location. Do not enter a fire area without proper protective equipment, including respiratory protection.

11. Accidental release measures

Protective equipment : Gloves (EN 374). Face shield (EN 166). Protective clothing (EN 14605 or EN 13034).

Environmental precautions: Avoid release to the environment.

For containment : Absorb spilled material with sand or earth. Contain any spills with dikes or absorbents to prevent migration and entry into sewers or streams. Stop leak without risks if possible.

12. Disposal consideration

Regional legislation (waste) : Disposal must be done according to official regulations.

Waste treatment methods : Dispose of contents/container in accordance with licensed collector's sorting instructions.

Sewage disposal recommendations : Disposal must be done according to official regulations.

13. Handling and storage

Precautions for safe handling: Use only outdoors or in a well-ventilated area. Avoid breathing dust/fume/gas/mist/vapors/spray. Avoid contact with skin and eyes. Wear personal protective equipment.

Hygiene measures : Wash contaminated clothing before reuse. Do not eat, drink or smoke when using this product. Always wash hands after handling the product.

GPS Safety Summary

1,2-Dichlorobenzene

CL-4:PUBLIC

14. Classification and Labeling

Hazard pictograms (GHS US)



Signal word (GHS US)

: Warning

Hazard statements (GHS US)

: H302 - Harmful if swallowed

H315 - Causes skin irritation

H319 - Causes serious eye irritation

H335 - May cause respiratory irritation

Precautionary statements (GHS US)

: P261 - Avoid breathing dust, fume, gas, mist, vapours, spray.

P264 - Wash hands, forearms and face thoroughly after handling.

P270 - Do not eat, drink or smoke when using this product.

P271 - Use only outdoors or in a well-ventilated area.

P280 - Wear protective gloves.

P301+P312 - If swallowed: Call a poison center or doctor if you feel unwell.

P302+P352 - If on skin: Wash with plenty of water.

P304+P340 - If inhaled: Remove person to fresh air and keep comfortable for breathing.

P305+P351+P338 - IF IN EYES: Rinse cautiously with water for several minutes. Remove contact lenses, if present and easy to do. Continue rinsing.

P312 - Call a poison center or doctor if you feel unwell.

P321 - Specific treatment (see supplemental first aid instruction on this label).

P330 - Rinse mouth.

P332+P313 - If skin irritation occurs: Get medical advice or attention.

P337+P313 - If eye irritation persists: Get medical advice or attention.

P362+P364 - Take off contaminated clothing and wash it before reuse.

P403+P233 - Store in a well-ventilated place. Keep container tightly closed.

P405 - Store locked up.

P501 - Dispose of contents and/or container to hazardous or special waste collection point, in accordance with local, regional, national and/or international regulations.

15. Conclusion

1,2-Dichlorobenzene is Colourless to light Yellow liquid. It is disagreeable odour. It is a Combustible substance, poorly flammable (flash point > 60 up to 93 °C). Vapours may form explosive mixtures with air when the substance is heated above its flash point. Practically insoluble in water. Heavier than water. Very low-volatile. Acute or chronic health hazards result from the substance. The substance is hazardous to the aquatic environment. The exposure must be kept as minimum as possible by the use of appropriate risk management measures as suitable collective and personal protective equipment, good industrial hygiene practices and risk communication through appropriate training of workers.

16. Contact Information within company

Manufacturer

Aarti Industries Limited

Udyog Kshetra, 2nd Floor, Mulund Goregaon Link Road, Mulund (West)

400080 Mumbai - India

T +91-22-6797-6666 - F +91-22-2565 3234

info@aarti-industries.com - www.aarti-industries.com

GPS Safety Summary

1,2-Dichlorobenzene

CL-4:PUBLIC

This GPS safety summary is intended to give general information about the health, safety and environment and not intended to provide in-depth details. To obtain the most accurate and current information, consult the appropriate Safety Data Sheet (SDS) prior to use of the material named herein.