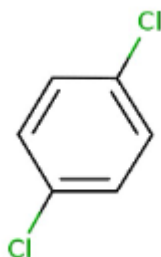


1. General Statement

1,4-Dichlorobenzene Liquid is an Amino compound, a weak oily, colourless liquid It is a combustible substance, poorly flammable(flash point > 60 up to 93 °C).Vapours may form explosive mixtures with air when the substance is heated above its flash point.Slightly soluble in water.Low or very low-volatile.Acute or chronic health hazards result from the substance.

2. Chemical identity

Name :1,4-Dichlorobenzene Liquid
CAS number(s) :106-46-7
EC number :203-400-5
Molecular formula :C₆H₄Cl₂
Structure :



3. Uses and Benefits

1,4-Dichlorobenzene Liquid is used1,4-Dichlorobenzene, or para-dichlorobenzene (p-DCB), is commonly used to control moths, molds, and mildew and as a bathroom deodorizer. It is also used as an intermediate in the synthesis of polyphenylene sulfide resin. It is used in the manufacture of other chemicals, such as herbicides, dyes, and pharmaceuticals.

4. Physical / chemical properties

Property	Value
Physical state :	Liquid
Colour :	Colorless.
Odour :	characteristic
pH :	No data available in the literature
Melting point	53.3 °C Sublimation: 'yes' Remarks on result: 'other:'
Boiling point :	174.12 °C Atm. press.: 1013 hPa Decomposition: 'no'
Flash point :	66 °C Atm. press.: 1013 hPa
Density :	1.246 g/cm ³ 60° C)

GPS Safety Summary

1,4-Dichlorobenzene Liquid

PUBLIC

CL-4:

Solubility in Water:	insoluble in water. Water: 0.0083 g/100ml
----------------------	---

5. Health Effects

Effect Assessment	Result
Acute toxicity (Oral / inhalation / dermal)	NA
Irritation / corrosion Skin / eye/ respiratory tract	Causes serious eye irritation.
Respiratory or skin sensitisation	NA
Toxicity after repeated exposure Oral / inhalation / dermal	NA
Genotoxicity / Mutagenicity	NA.
Carcinogenicity	Suspected of causing cancer.
Toxicity for reproduction	NA

6. Environmental Effects

Effect Assessment	Result
Aquatic toxicity	Yes
Fate and behavior	Result
Persistence and degradability	Not rapidly degradable.
Bioaccumulative potential	296 Exposure time: 28 d ,Temperature: 25 °C

7. Exposure

Human health

It can cause serious eye irritation (H319), is suspected of causing cancer (H351), and is very toxic to aquatic life with long-lasting effects (H410). Therefore, it must be handled with caution, using proper protective equipment, and disposed of responsibly to minimize harm to humans and the environment..The exposure must be kept as minimum as possible by the use of appropriate risk management measures as suitable collective and personal protective equipment, good industrial hygiene practices and risk communication through appropriate training of workers.Careless handling or accidental spillage of the chemical could result in exposure to potentially hazardous levels of chemicals. Industrial workers should ensure that they follow the advice found in the extended safety data sheet (SDS).

Environment

Care should be taken to avoid releases of these products to sewage, drainage systems and water bodies. Spillage shall be quickly collected in the event of an accidental release. More information about release measures and accidental release measures are available in the extended safety data sheet.

GPS Safety Summary

1,4-Dichlorobenzene Liquid

PUBLIC

CL-4:

8. Risk Management Recommendations

Human health measures

Organizational	A basic standard of occupational hygiene is recommended. Ensure operatives are well informed of the hazards and trained to minimise exposures. Ensure regular inspection and maintenance of equipment and machines. Handle and store according to the indications of the Safety Data Sheet.	
Protection	Eye protection:	Safety glasses (EN 166). In case of dust production: protective goggles (EN 166)
	Skin and body protection:	Wear suitable protective clothing
	Respiratory protection:	In case of insufficient ventilation, wear suitable respiratory equipment.
Engineering controls	Ensure good ventilation of the work station.	
Environment protective measures		
Avoid release to the environment.		

9. First-aid measures

First-aid measures after inhalation : Remove the person to fresh air and keep them comfortable for breathing.

First-aid measures after skin contact : Wash skin with plenty of water.

First-aid measures after eye contact : Rinse cautiously with water for several minutes. Remove contact lenses, if present and easy to do. Continue rinsing. If eye irritation persists: Get medical advice/attention.

First-aid measures after ingestion : Call a poison center or a doctor if you feel unwell.

10. Fire-fighting measures

Extinguishing media

Suitable extinguishing media: Water spray. Dry powder. Foam. Carbon dioxide.

Unsuitable extinguishing media : Do not use a heavy water stream.

Special hazards arising from the substance or mixture

Hazardous decomposition products in case of fire : Toxic fumes may be released.

Advice for firefighters

GPS Safety Summary

1,4-Dichlorobenzene Liquid

CL-4:

PUBLIC

Precautionary measures fire: Keep away from combustible materials. Keep the container closed when not in use. Stop leak if safe to do so.

Firefighting instructions : Fight fire from safe distance and protected location. Do not enter a fire area without proper protective equipment, including respiratory protection.

11. Accidental release measures

Protective equipment : Protective Gloves.Wear recommended personal protective equipment.

Environmental precautions: Avoid release to the environment.

For containment : Collect spillage. Contain any spills with dikes or absorbents to prevent migration and entry into sewers or streams. Stop leaks without risks if possible.

12. Disposal consideration

Regional legislation (waste) : Disposal must be done according to official regulations.

Waste treatment methods : Dispose of contents/container in accordance with licensed collector's sorting instructions.

Sewage disposal recommendations : Disposal must be done according to official regulations.

13. Handling and storage

Precautions for safe handling : Ensure good ventilation of the work station. Obtain special instructions before use. Do not handle it until all safety precautions have been read and understood. Wear personal protective equipment. Avoid contact with skin and eyes.

Hygiene measures :Do not eat, drink or smoke when using this product. Always wash hands after handling the product.

GPS Safety Summary

1,4-Dichlorobenzene Liquid

PUBLIC

CL-4:

14. Classification and Labeling

Hazard pictograms (GHS US)

:



Signal word (GHS US)

: Warning

Hazard statements (GHS US)

: H319 - Causes serious eye irritation
H351 - Suspected of causing cancer.
H410 - Very toxic to aquatic life with long lasting effects

Precautionary statements (GHS US)

: P201 - Obtain special instructions before use.
P202 - Do not handle until all safety precautions have been read and understood.
P264 - Wash hands, forearms and face thoroughly after handling.
P273 - Avoid release to the environment.
P280 - Wear protective gloves, protective clothing, eye protection, face protection, and hearing protection.
P305+P351+P338 - IF IN EYES: Rinse cautiously with water for several minutes. Remove contact lenses, if present and easy to do. Continue rinsing.
P308+P313 - If exposed or concerned: Get medical advice/attention.
P337+P313 - If eye irritation persists: Get medical advice or attention.
P391 - Collect spillage.
P405 - Store locked up.
P501 - Dispose of contents and/or container to hazardous or special waste collection point, in accordance with local, regional, national and/or international regulations.

15. Conclusion

1,4-Dichlorobenzene Liquid is a colorless, weakly flammable oily liquid primarily used as a moth repellent, deodorizer, and chemical intermediate in manufacturing. Safe handling requires strict adherence to occupational hygiene practices, including the use of personal protective equipment (eye, skin, and respiratory protection), good ventilation, and proper training. Immediate first-aid measures and fire-fighting precautions are essential to mitigate accidental exposure and emergencies. Care should be taken to avoid releases of these products to sewage, drainage systems and water bodies. The exposure must be kept as minimum as possible by the use of appropriate risk management measures as suitable collective and personal protective equipment, good industrial hygiene practices and risk communication through appropriate training of workers.

16. Contact Information within company

Manufacturer

Aarti Industries Limited

Udyog Kshetra, 2nd Floor, Mulund Goregaon Link Road, Mulund (West)

400080 Mumbai - India

T +91-22-6797-6666 - F +91-22-2565 3234

info@aarti-industries.com - www.aarti-industries.com

This GPS safety summary is intended to give general information about the health, safety and environmental and not intended to provide in-depth details. To obtain the most accurate and current information, consult the appropriate Safety Data Sheet (SDS) prior to use of the material named herein.