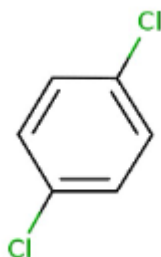


1. General Statement

1,4-Dichlorobenzene Solid is an Amino compound, a weak oily, colourless liquid It is a combustible substance, poorly flammable(flash point > 60 up to 93 °C).Vapours may form explosive mixtures with air when the substance is heated above its flash point.Slightly soluble in water.Low or very low-volatile.Acute or chronic health hazards result from the substance.

2. Chemical identity

Name :1,4-Dichlorobenzene Solid
CAS number(s) : 106-46-7
EC number : 203-400-5
Molecular formula :C₆H₄Cl₂
Structure :



3. Uses and Benefits

1,4-Dichlorobenzene Solid is used as : Use as laboratory reagent, Laboratory chemicals as well as Pharmaceuticals.This substance is used by consumers, in articles, by professional workers (widespread uses), in formulation or re-packing, at industrial sites and in manufacturing.This substance is used in the following products: air care products and polymers.Other release to the environment of this substance is likely to occur from: indoor use as processing aid and indoor use in long-life materials with low release rate (e.g. flooring, furniture, toys, construction materials, curtains, foot-wear, leather products, paper and cardboard products, electronic equipment).

4. Physical / chemical properties

Property	Value
Physical state :	Solid
Colour :	White
Odour :	camphor-like odour, impure:repulsive odour.
pH :	No data available in the literature

GPS Safety Summary

1,4-Dichlorobenzene Solid

CL-4:

PUBLIC

Melting point	53 °C
Boiling point :	174 °C (1013 hPa)
Flash point :	66 °C (Closed cup, 1013 hPa)
Density :	1460 kg/m3 (20 °C)
Solubility in Water:	0.0083 g/100ml

5. Health Effects

Effect Assessment	Result
Acute toxicity (Oral / inhalation / dermal)	Not classified
Irritation / corrosion Skin / eye/ respiratory tract	Causes serious eye irritation.
Respiratory or skin sensitisation	NA
Toxicity after repeated exposure Oral / inhalation / dermal	NA
Genotoxicity / Mutagenicity	NA.
Carcinogenicity	Suspected of causing cancer.
Toxicity for reproduction	NA

6. Environmental Effects

Effect Assessment	Result
Aquatic toxicity	Yes
Fate and behavior	Result
Persistence and degradability	Biodegradable in the soil. Readily biodegradable in water.
Bioaccumulative potential	Low potential for bioaccumulation (BCF < 500).

7. Exposure

Human health

The substance is suspected of causing cancer. It causes serious eye irritation..

The most likely route of human exposure (workers) is through skin. In industrial settings, ingestion is not an anticipated route of exposure. Workers may be exposed during (un)loading, mixing, sampling, analysis or

GPS Safety Summary

1,4-Dichlorobenzene Solid

CL-4:

PUBLIC

maintenance operations and particularly in case of batch processes. The exposure must be kept as minimum as possible by the use of appropriate risk management measures as suitable collective and personal protective equipment, good industrial hygiene practices and risk communication through appropriate training of workers. Careless handling or accidental spillage of the chemical could result in exposure to potentially hazardous levels of chemicals. Industrial workers should ensure that they follow the advice found in the extended safety data sheet (SDS).

Environment

Care should be taken to avoid releases of these products to sewage, drainage systems and water bodies. Spillage shall be quickly collected in the event of an accidental release. More information about release measures and accidental release measures are available in the extended safety data sheet.

8. Risk Management Recommendations

Human health measures

Organizational	A basic standard of occupational hygiene is recommended. Ensure operatives are well informed of the hazards and trained to minimise exposures. Ensure regular inspection and maintenance of equipment and machines. Handle and store according to the indications of the Safety Data Sheet.	
Protection	Eye protection:	Safety glasses (EN 166). In case of dust production: protective goggles (EN 166)
	Skin and body protection:	Protective clothing (EN 14605 or EN 13034)
	Respiratory protection:	Combined gas/dust mask with filter type A/P2
Engineering controls	Ensure good ventilation of the work station.	
Environment protective measures		
Avoid release to the environment.		

9. First-aid measures

First-aid measures after inhalation :Remove victims into fresh air. In case of respiratory problems, consult a doctor/medical service.

First-aid measures after skin contact : If possible, wipe up/dry remove chemicals. Then rinse/shower immediately with (lukewarm) water.If irritation persists, consult a doctor/medical service.

GPS Safety Summary

1,4-Dichlorobenzene Solid

CL-4:

PUBLIC

First-aid measures after eye contact : Rinse immediately with plenty of water. Remove contact lenses, if present and easy to do. Continue rinsing. If irritation persists, consult a doctor/medical service.

First-aid measures after ingestion : Rinse mouth with water. If you feel unwell, consult a doctor/medical service. Do not wait for symptoms to occur to consult the Poison Center.

10. Fire-fighting measures

Extinguishing media

Suitable extinguishing media : Quick-acting ABC powder extinguisher. Quick-acting BC powder extinguisher. Quick-acting class B foam extinguisher. Quick-acting CO2 extinguisher. Class B foam (not alcohol-resistant).

Unsuitable extinguishing media : Water (quick-acting extinguisher, reel); risk of puddle expansion. Water; risk of puddle expansion.

Special hazards arising from the substance or mixture

Hazardous decomposition products in case of fire : On burning: release of toxic and corrosive gases/vapours (hydrogen chloride).

Advice for firefighters

Precautionary measures fire : Exposure to fire/heat: keep upwind. Exposure to fire/heat: consider evacuation. Exposure to fire/heat: have neighbourhood close doors and windows.

Firefighting instructions : Fight fire from safe distance and protected location. Do not enter a fire area without proper protective equipment, including respiratory protection.

11. Accidental release measures

Protective equipment : Gloves (EN 374). Safety glasses (EN 166). Protective clothing (EN 14605 or EN 13034). Dust cloud production: self-contained breathing apparatus (EN 136 + EN 137). Reactivity hazard: self-contained breathing apparatus (EN 136 + EN 137). Reactivity hazard: gas-tight suit (EN 943).

Environmental precautions: Prevent soil and water pollution. Prevent spreading in sewers.

For containment : Contain released product, collect/pump into suitable containers. Plug the leak, cut off the supply. Dam up the solid spill. Knock down/dilute dust cloud with water spray. Powdered form: no compressed air for pumping over spills. If reacting: dilute toxic gas/vapour with water spray. Take account of toxic/corrosive precipitation water.

12. Disposal consideration

Regional legislation (waste) : Disposal must be done according to official regulations.

Waste treatment methods : Dispose of contents/container in accordance with licensed collector's sorting instructions.

GPS Safety Summary

1,4-Dichlorobenzene Solid

PUBLIC

CL-4:

Sewage disposal recommendations : Disposal must be done according to official regulations.

13. Handling and storage

Precautions for safe handling : Avoid raising dust. At temperature > flashpoint: use spark-/explosionproof appliances. Keep away from naked flames/heat. In a finely divided state: use spark-/explosionproof appliances. Finely divided: keep away from ignition sources/sparks. Measure the concentration in the air regularly. Carry operations in the open/under local exhaust/ventilation or with respiratory protection. Comply with the legal requirements. Clean contaminated clothing. Keep the container tightly closed. Do not discharge the waste into the drain. Powdered form: no compressed air for pumping over.

Hygiene measures : Observe strict hygiene.

14. Classification and Labeling

Hazard pictograms (GHS US)

:



Signal word (GHS US)

: Warning

Hazard statements (GHS US)

: H319 - Causes serious eye irritation

H351 - Suspected of causing cancer.

Precautionary statements (GHS US)

: P201 - Obtain special instructions before use.

P202 - Do not handle until all safety precautions have been read and understood.

P264 - Wash hands, forearms and face thoroughly after handling.

P280 - Wear protective gloves, protective clothing, eye protection, face protection, and hearing protection.

P305+P351+P338 - IF IN EYES: Rinse cautiously with water for several minutes. Remove contact lenses, if present and easy to do. Continue rinsing.

P308+P313 - If exposed or concerned: Get medical advice/attention.

P337+P313 - If eye irritation persists: Get medical advice or attention.

P405 - Store locked up.

P501 - Dispose of contents and/or container to hazardous or special waste collection point, in accordance with local, regional, national and/or international regulations.

15. Conclusion

1,4-Dichlorobenzene Solid is an Halogenated hydrocarbons, aromatic Chlorine compound. This substance is very toxic to aquatic life, is very toxic to aquatic life with long lasting effects, causes serious eye irritation and is suspected of causing cancer. Care should be taken to avoid releases of these products to sewage, drainage systems and water bodies. The exposure must be kept as minimum as possible by the use of appropriate risk management measures as suitable collective and personal protective equipment, good industrial hygiene practices and risk communication through appropriate training of workers.

16. Contact Information within company

Manufacturer

Aarti Industries Limited

GPS Safety Summary

1,4-Dichlorobenzene Solid

CL-4:

PUBLIC

Udyog Kshetra, 2nd Floor, Mulund Goregaon Link Road, Mulund (West)

400080 Mumbai - India

T +91-22-6797-6666 - F +91-22-2565 3234

info@aarti-industries.com - www.aarti-industries.com

This GPS safety summary is intended to give general information about the health, safety and environmental and not intended to provide in-depth details. To obtain the most accurate and current information, consult the appropriate Safety Data Sheet (SDS) prior to use of the material named herein.