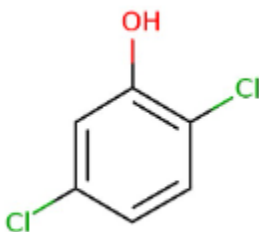


### 1. General Statement

2,5 Di Chloro Phenol is a crystalline solid phenol like-Odour. Combustible substance, poorly flammable. Slightly soluble in water. Acute or chronic health hazards result from the substance. The substance is hazardous to the aquatic environment.

### 2. Chemical identification.

Name : 2,5 Di Chloro Phenol  
 CAS number(s) : 583-78-8  
 EC number : 209-520-4  
 Molecular formula : C<sub>6</sub>H<sub>4</sub>Cl<sub>2</sub>O  
 Structure :



### 3. Uses and Benefits

It is used as Chemical intermediate Pesticide: component Intermediate under strictly controlled conditions

### 4. Physical / chemical properties

Property	Value
Physical state :	Solid
Colour :	Colourless to yellow-brown
Odour :	Unpleasant odour Phenol odour
pH :	No data available
Melting point :	59 °C
Boiling point :	211°C
Flash point :	100 °C
Density :	Not available
Solubility in Water:	0.2 g/100ml

## **5. Health Effects**

<b>Effect Assessment</b>	<b>Result</b>
<b>Acute toxicity (Oral / inhalation / dermal )</b>	Harmful if swallowed,
<b>Irritation / corrosion Skin / eye/ respiratory tract</b>	NA
<b>Respiratory or skin sensitisation</b>	NA
<b>Toxicity after repeated exposure Oral / inhalation / dermal</b>	NA
<b>Genotoxicity / Mutagenicity</b>	NA
<b>Carcinogenicity</b>	NA
<b>Toxicity for reproduction</b>	NA

## **6. Environmental Effects**

<b>Effect Assessment</b>	<b>Result</b>
<b>Aquatic toxicity</b>	NO
<b>Fate and behavior</b>	<b>Result</b>
<b>Persistence and degradability</b>	Biodegradability in soil: no data available.
<b>Bioaccumulative potential</b>	No bioaccumulation data available.

## **7. Exposure**

### **Human health**

2,5 Di Chloro Phenol is harmful if swallowed, The main intake pathways for 2,5-dichlorophenol (2,5-DCP) in the workplace are probably via the skin and the respiratory tract. 2,5-DCP can be inhaled in the form of dusts, aerosols from solutions or vapors. Irritation and corrosive effects to the eyes and skin, Irritation and damage to the airways, potential to cause disturbances in the central nervous system. The exposure must be kept as minimum as possible by the use of appropriate risk management measures suitable collective and personal protective equipment, good industrial hygiene practices and risk communication through appropriate training of workers. Careless handling or accidental spillage of the chemical could result in exposure to potentially hazardous levels of chemicals. Industrial workers should ensure that they follow the advice found in the extended safety data sheet (SDS).

# GPS Safety Summary

## 2,5 Di Chloro Phenol

CL-4:PUBLIC

### Environment

Care should be taken to avoid releases of these products to sewage, drainage systems and water bodies. Spillage shall be quickly collected in the event of an accidental release. More information about release measures and accidental release measures are available in the extended safety data sheet.

### 8. Risk Management Recommendations

#### Human health measures

Organizational	A basic standard of occupational hygiene is recommended. Ensure operatives are well informed of the hazards and trained to minimise exposures. Ensure regular inspection and maintenance of equipment and machines. Handle and store according to the indications of the Safety Data Sheet.	
Protection	Eye protection:	Face shield (EN 166). In case of dust production: protective goggles (EN 166)
	Skin and body protection:	Protective clothing (EN 14605 or EN 13034). In case of dust production: head/neck protection. In case of dust production: dustproof clothing (EN 13982)
	Respiratory protection:	Dust production: dust mask with filter type P2
Engineering controls	Do not breathe dust. Emergency eye wash fountains and safety showers should be available in the immediate vicinity of any potential exposure. Ensure good ventilation of the work station.	
Environment protective measures		
Avoid release to the environment.		

### 9. First-aid measures

**First-aid measures after inhalation:** Remove victim into fresh air. In case of respiratory problems, consult a doctor/medical service.

**First-aid measures after skin contact:** If possible, wipe up/dry remove chemical. Then rinse/shower immediately with (lukewarm) water. If irritation persists, consult a doctor/medical service.

**First-aid measures after eye contact:** Rinse immediately with plenty of water. Remove contact lenses, if present and easy to do. Continue rinsing. If irritation persists, consult a doctor/medical service.

**First-aid measures after ingestion :** Rinse mouth with water. Immediately consult a doctor/medical service. Do not wait for symptoms to occur to consult the Poison Center.

### 10. Fire-fighting measures

#### **Extinguishing media**

**Suitable extinguishing media:** Quick-acting ABC powder extinguisher. Quick-acting BC powder extinguisher. Quick-acting class B foam extinguisher. Quick-acting CO2 extinguisher. Class B foam (not alcohol-resistant).

**Unsuitable extinguishing media :** Water (quick-acting extinguisher, reel); risk of puddle expansion. Water; risk of puddle expansion.

#### **Special hazards arising from the substance or mixture**

**Hazardous decomposition products in case of fire:** On burning: release of toxic and corrosive gases/vapours (hydrogen chloride, carbon monoxide - carbon dioxide).

#### **Advice for firefighters**

**Precautionary measures fire :** Exposure to fire/heat: keep upwind. Exposure to fire/heat: consider evacuation. Exposure to fire/heat: have neighbourhood close doors and windows.

**Firefighting instructions :** Dilute toxic gases with water spray. Take account of toxic/corrosive precipitation water. Take account of environmentally hazardous firefighting water. Use water moderately and if possible collect or contain it.

### 11. Accidental release measures

**Protective equipment :** Gloves (EN 374). Face shield (EN 166). Protective clothing (EN 14605 or EN 13034). Dust cloud production: self-contained breathing apparatus (EN 136 + EN 137). Dust cloud production: dust-tight suit (EN 13982).

**Environmental precautions:** Prevent soil and water pollution. Prevent spreading in sewers.

**For containment :** Contain released product, collect/pump into suitable containers. Plug the leak, cut off the supply. Dam up the solid spill. Knock down/dilute dust clouds with water spray. Powdered form: no compressed air for pumping over spills.

### 12. Disposal consideration

**Regional legislation (waste) :** Disposal must be done according to official regulations.

**Waste treatment methods :** Dispose of contents/container in accordance with licensed collector's sorting instructions.

**Sewage disposal recommendations :** Disposal must be done according to official regulations.

# GPS Safety Summary

## 2,5 Di Chloro Phenol

CL-4:PUBLIC

### 13. Handling and storage

**Precautions for safe handling:** Avoid raising dust. Keep away from naked flames/heat. In a finely divided state: use spark-/explosionproof appliances. Finely divided: keep away from ignition sources/sparks. Carry operations in the open/under local exhaust/ventilation or with respiratory protection. Comply with the legal requirements. Clean contaminated clothing. Keep the container tightly closed. Do not discharge the waste into the drain. Powdered form: no compressed air for pumping over.

**Hygiene measures :** Observe normal hygiene standards.

### 14. Classification and Labeling

Hazard pictograms (GHS US)



Signal word (GHS US)

: Warning

Hazard statements (GHS US)

: H302 - Harmful if swallowed

H315 - Causes skin irritation

H319 - Causes serious eye irritation

Precautionary statements (GHS US)

: P264 - Wash hands, forearms and face thoroughly after handling.

P270 - Do not eat, drink or smoke when using this product.

P280 - Wear protective gloves, protective clothing, eye protection, face protection.

P301+P312 - If swallowed: Call a POISON CENTER, a doctor if you feel unwell.

P302+P352 - If on skin: Wash with plenty of water.

P305+P351+P338 - IF IN EYES: Rinse cautiously with water for several minutes. Remove contact lenses, if present and easy to do. Continue rinsing.

P321 - Specific treatment (see supplemental first aid instruction, Label on this label).

P330 - Rinse mouth.

P332+P313 - If skin irritation occurs: Get medical advice/attention.

P337+P313 - If eye irritation persists: Get medical advice/attention.

P362+P364 - Take off contaminated clothing and wash it before reuse.

P501 - Dispose of contents/container to hazardous or special waste collection point, in accordance with local, regional, national and/or international regulation.

### 15. Conclusion

2,5 Di Chloro Phenol is a crystalline solid phenol like-Odour. Combustible substance, poorly flammable. Slightly soluble in water. Acute or chronic health hazards result from the substance. The substance is hazardous to the aquatic environment. Care should be taken to avoid releases of these products to sewage, drainage systems and water bodies. The exposure must be kept as minimum as possible by the use of appropriate risk management measures as suitable collective and personal protective equipment, good industrial hygiene practices and risk communication through appropriate training of workers.

### 16. Contact Information within company

#### **Manufacturer**

Aarti Industries Limited

Udyog Kshetra, 2nd Floor, Mulund Goregaon Link Road, Mulund (West)

## **GPS Safety Summary**

### **2,5 Di Chloro Phenol**

**CL-4:PUBLIC**

---

400080 Mumbai - India

T +91-22-6797-6666 - F +91-22-2565 3234

info@aarti-industries.com - www.aarti-industries.com

This GPS safety summary is intended to give general information about the health, safety and environment and not intended to provide in-depth details. To obtain the most accurate and current information, consult the appropriate Safety Data Sheet (SDS) prior to use of the material named herein.