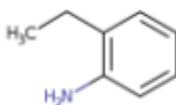


### 1. General Statements

2-Ethylaniline is a yellowish liquid or amine-like odour. Combustible substance, poorly flammable. Very slightly soluble in water. Low or very low-volatile. Acute or chronic health hazards result from the substance. The substance is hazardous to the aquatic environment.

### 2. Chemical identification.

Name : 2-Ethylaniline  
 CAS number(s) : 578-54-1  
 EC number : 209-424-2  
 Molecular formula : C<sub>8</sub>H<sub>11</sub>N  
 Structure :



### 3. Uses and Benefits

It is used in the synthesis of pharmaceutical compounds where substitution on the aromatic ring is required for specific drug molecules. Intermediate for dyestuffs, pesticides. Sometimes used in the manufacture of antioxidants and anti-degradants for rubber products.

### 4. Physical / chemical properties

Property	Value
Physical state :	Liquid
Colour :	Yellow to red-brown On exposure to air: turns brown
Odour :	Aromatic odour
pH :	NA
Melting point :	-46.5°C.
Boiling point :	209.65°C.
Flash point :	85°C.
Density :	0,98 g/cm <sup>3</sup> at 20 °C
Solubility in Water:	Practically insoluble in water

# GPS Safety Summary

## 2-Ethylaniline

CL-4:PUBLIC

### 5. Health Effects

Effect Assessment	Result
Acute toxicity (Oral / inhalation / dermal )	Harmful if swallowed
Irritation / corrosion Skin / eye/ respiratory tract	Toxic in contact with skin,Causes serious eye irritation
Respiratory or skin sensitisation	NA
Toxicity after repeated exposure Oral / inhalation / dermal	May cause damage to organs through prolonged or repeated exposure
Genotoxicity / Mutagenicity	NA
Carcinogenicity	NA
Toxicity for reproduction	NA

### 6. Environmental Effects

Effect Assessment	Result
Aquatic toxicity	No
Fate and behavior	Result
Persistence and degradability	Biodegradability in water: no data available.
Bioaccumulative potential	No additional information available

### 7. Exposure

#### Human health

2-Ethylaniline is Harmful if swallowed Toxic in contact with skin,Causes serious eye irritation, May cause damage to organs through prolonged or repeated exposure.The exposure must be kept as minimum as possible by the use of appropriate risk management measures suitable collective and personal protective equipment, good industrial hygiene practices and risk communication through appropriate training of workers.Careless handling or accidental spillage of the chemical could result in exposure to potentially hazardous levels of chemicals.Industrial workers should ensure that they follow the advice found in the extended safety data sheet (SDS).

#### Environment:

Care should be taken to avoid releases of these products to sewage, drainage systems and water bodies. Spillage shall be quickly collected in the event of an accidental release. More information about release measures and accidental release measures are available in the extended safety data sheet.

# GPS Safety Summary

## 2-Ethylaniline

CL-4:PUBLIC

---

### 8. Risk Management Recommendations

#### Human health measures.

Organizational	A basic standard of occupational hygiene is recommended. Ensure operatives are well informed of the hazards and trained to minimise exposures. Ensure regular inspection and maintenance of equipment and machines. Handle and store according to the indications of the Safety Data Sheet.	
Protection	Eye protection:	Safety glasses
	Skin and body protection:	Wear suitable protective clothing
	Respiratory protection:	In case of insufficient ventilation, wear suitable respiratory equipment.
Engineering controls	Ensure good ventilation of the work station..	
Environment protective measures		
Avoid release to the environment		

### 9. First-aid measures

**First-aid measures after inhalation :** Remove the person to fresh air and keep them comfortable for breathing.

**First-aid measures after skin contact :** Wash skin with plenty of water. Remove/Take off immediately all contaminated clothing.

**First-aid measures after eye contact :** Rinse cautiously with water for several minutes. Remove contact lenses, if present and easy to do. Continue rinsing. If eye irritation persists: Get medical advice/attention.

**First-aid measures after ingestion :** Rinse mouth. Call a poison center or a doctor if you feel unwell.

### 10. Fire-fighting measures

#### Extinguishing media

**Suitable extinguishing media:** Water spray. Dry powder. Foam. Carbon dioxide.

**Unsuitable extinguishing media :** Water (quick-acting extinguisher, reel); risk of puddle expansion. Water; risk of puddle expansion.

#### Special hazards arising from the substance or mixture

**Hazardous decomposition products in case of fire :** On heating/burning: release of toxic and corrosive gases/vapours (nitrous vapours, carbon monoxide - carbon dioxide).

# GPS Safety Summary

## 2-Ethylaniline

CL-4:PUBLIC

---

### Advice for firefighters

**Precautionary measures fire** : Exposure to fire/heat: keep upwind. Exposure to fire/heat: consider evacuation. Exposure to fire/heat: seal off low-lying areas. Exposure to fire/heat: have neighbourhood close doors and windows.

**Firefighting instructions** : Fight fire from safe distance and protected location. Do not enter a fire area without proper protective equipment, including respiratory protection.

### 11. Accidental release measures

**Protective equipment** : Gloves (EN 374). Safety glasses (EN 166). Protective clothing (EN 14605 or EN 13034). Reactivity hazard: self-contained breathing apparatus (EN 136 + EN 137).

**Environmental precautions**: Avoid release to the environment.

**For containment** : Absorb spilled material with sand or earth. Contain any spills with dikes or absorbents to prevent migration and entry into sewers or streams. Stop leaks without risks if possible.

### 12. Disposal consideration

**Regional legislation (waste)** : Disposal must be done according to official regulations.

**Waste treatment methods** : Dispose of contents/container in accordance with licensed collector's sorting instructions.

**Sewage disposal recommendations** : Disposal must be done according to official regulations.

### 13. Handling and storage

**Precautions for safe handling** : Ensure good ventilation of the work station. Do not breathe dust/fume/gas/mist/vapors/spray. Do not get in eyes, on skin, or on clothing. Wear personal protective equipment.


**Hygiene measures** : Wash contaminated clothing before reuse. Do not eat, drink or smoke when using this product. Always wash hands after handling the product.

# GPS Safety Summary

## 2-Ethylaniline

CL-4:PUBLIC

### 14. Classification and Labeling

Hazard pictograms (GHS US)	:	
Signal word (GHS US)	:	Danger
Hazard statements (GHS US)	:	H302 - Harmful if swallowed H311 - Toxic in contact with skin H319 - Causes serious eye irritation H373 - May cause damage to organs through prolonged or repeated exposure
Precautionary statements (GHS US)	:	P260 - Do not breathe dust, fume, gas, mist, vapours, spray. P264 - Wash hands, forearms and face thoroughly after handling. P270 - Do not eat, drink or smoke when using this product. P280 - Wear protective gloves, protective clothing, eye protection, face protection, and hearing protection. P301+P312 - If swallowed: Call a poison center or doctor if you feel unwell. P302+P352 - If on skin: Wash with plenty of water. P305+P351+P338 - IF IN EYES: Rinse cautiously with water for several minutes. Remove contact lenses, if present and easy to do. Continue rinsing. P312 - Call a poison center or doctor if you feel unwell. P314 - Get medical advice or attention if you feel unwell. P321 - Specific treatment (see supplemental first aid instruction on this label). P330 - Rinse mouth. P337+P313 - If eye irritation persists: Get medical advice or attention. P361+P364 - Take off immediately all contaminated clothing and wash it before reuse. P405 - Store locked up. P501 - Dispose of contents and/or container to hazardous or special waste collection point, in accordance with local, regional, national and/or international regulations.

### 15. Conclusion

2-Ethylaniline is a yellowish liquid or amine-like odour. Combustible substance, poorly flammable. Very slightly soluble in water. Low or very low-volatile. Acute or chronic health hazards result from the substance. The substance is hazardous to the aquatic environment. The substance can react dangerously with acids, strong oxidizing agents, acid anhydrides and acid halides. Reaction with nitrosating agents (e.g. nitrites, nitrous acid, nitrous gases) can release cancerogenic nitrosamines. Under occupational conditions, the main intake pathways for 2-ethylaniline are expected to be via the respiratory tract and through the skin. The exposure must be kept as minimum as possible by the use of appropriate risk management measures as suitable collective and personal protective equipment, good industrial hygiene practices and risk communication through appropriate training of workers.

### 16. Contact Information within company

#### Manufacturer

Aarti Industries Limited

Udyog Kshetra, 2nd Floor, Mulund Goregaon Link Road, Mulund (West)

400080 Mumbai - India

T +91-22-6797-6666 - F +91-22-2565 3234

info@aarti-industries.com - www.aarti-industries.com

# **GPS Safety Summary**

## **2-Ethylaniline**

**CL-4:PUBLIC**

---

This GPS safety summary is intended to give general information about the health, safety and environment and not intended to provide in-depth details. To obtain the most accurate and current information, consult the appropriate Safety Data Sheet (SDS) prior to use of the material named herein.