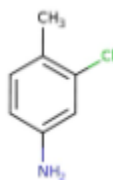


### 1. General Statements

2-Ethylaniline is liquid or solid, depending on the room temperature. Products containing impurities can be liquid. It is Combustible substance, poorly flammable. Slightly soluble in water. Heavier than water. Acute or chronic health hazards result from the substance. The substance is hazardous to the aquatic environment.

### 2. Chemical identification.

Name : 2-Ethylaniline  
 CAS number(s) : 95-74-9  
 EC number : 202-446-3  
 Molecular formula : C<sub>7</sub>H<sub>8</sub>ClN  
 Structure :



### 3. Uses and Benefits

It can be used as a building block or intermediate in the synthesis of pharmaceutical compounds. It serves as a precursor for azo dyes and other colored compounds. Used in the synthesis of herbicides, insecticides, or fungicides. Utilized in research laboratories for the development of new compounds or materials.

### 4. Physical / chemical properties

Property	Value
Physical state :	Liquid
Colour :	Dark brown
Odour :	odourless
pH :	NA
Melting point :	24 °C.
Boiling point :	243 °C Atm. press.: 1013 hPa
Flash point :	88.5 °C at 1013 hPa
Density :	1.17 g/cm <sup>3</sup>
Solubility in Water:	2,5 g/l at 25°C

# GPS Safety Summary

## 2-Ethylaniline

CL-4:PUBLIC

### 5. Health Effects

Effect Assessment	Result
Acute toxicity (Oral / inhalation / dermal )	Toxic if swallowed or in contact with skin
Irritation / corrosion Skin / eye/ respiratory tract	It Causes skin irritation, May cause an allergic skin reaction Causes serious eye irritation
Respiratory or skin sensitisation	NA
Toxicity after repeated exposure Oral / inhalation / dermal	NA
Genotoxicity / Mutagenicity	NA
Carcinogenicity	NA
Toxicity for reproduction	NA

### 6. Environmental Effects

Effect Assessment	Result
Aquatic toxicity	Yes
Fate and behavior	Result
Persistence and degradability	Not rapidly degradable
Bioaccumulative potential	No additional information available

### 7. Exposure

#### Human health

2-Ethylaniline is Toxic if swallowed or in contact with skin. It Causes skin irritation, May cause an allergic skin reaction Causes serious eye irritation. The main intake pathways for 3-chloro-4-methylaniline) are via the respiratory tract and through the skin. The exposure must be kept as minimum as possible by the use of appropriate risk management measures suitable collective and personal protective equipment, good industrial hygiene practices and risk communication through appropriate training of workers. Careless handling or accidental spillage of the chemical could result in exposure to potentially hazardous levels of chemicals. Industrial workers should ensure that they follow the advice found in the extended safety data sheet (SDS).

#### Environment:

Care should be taken to avoid releases of these products to sewage, drainage systems and water bodies. Spillage shall be quickly collected in the event of an accidental release. More information about release measures and accidental release measures are available in the extended safety data sheet.

# GPS Safety Summary

## 2-Ethylaniline

CL-4:PUBLIC

### 8. Risk Management Recommendations

#### Human health measures.

Organizational	A basic standard of occupational hygiene is recommended. Ensure operatives are well informed of the hazards and trained to minimise exposures. Ensure regular inspection and maintenance of equipment and machines. Handle and store according to the indications of the Safety Data Sheet.	
Protection	Eye protection:	Safety glasses
	Skin and body protection:	Wear suitable protective clothing
	Respiratory protection:	In case of insufficient ventilation, wear suitable respiratory equipment.
Engineering controls	Ensure good ventilation of the work station..	
Environment protective measures		
Avoid release to the environment		

### 9. First-aid measures

**First-aid measures after inhalation** : Remove the person to fresh air and keep them comfortable for breathing.

**First-aid measures after skin contact** : Wash skin with plenty of water. Remove/Take off immediately all contaminated clothing. If skin irritation or rash occurs: Get medical advice/attention.

**First-aid measures after eye contact** : Rinse cautiously with water for several minutes. Remove contact lenses, if present and easy to do. Continue rinsing. If eye irritation persists: Get medical advice/attention.

**First-aid measures after ingestion** : Rinse mouth. Call a physician immediately.

### 10. Fire-fighting measures

#### Extinguishing media

**Suitable extinguishing media**: Water spray. Dry powder. Foam. Carbon dioxide.

**Unsuitable extinguishing media** : Do not use a heavy water stream.

#### Special hazards arising from the substance or mixture

**Hazardous decomposition products in case of fire** : Toxic fumes may be released.

#### Advice for firefighters

**Precautionary measures fire** : Exposure to fire/heat: keep upwind. Exposure to fire/heat: consider evacuation. Exposure to fire/heat: seal off low-lying areas. Exposure to fire/heat: have neighbourhood close doors and windows.

# GPS Safety Summary

## 2-Ethylaniline

CL-4:PUBLIC

---

**Firefighting instructions** : Fight fire from safe distance and protected location. Do not enter fire area without proper protective equipment, including respiratory protection.

### 11. Accidental release measures

**Protective equipment** : Safety glasses. Protective clothing. Gloves.

**Environmental precautions**: Avoid release to the environment.

**For containment** :Collect spillage. Contain any spills with dikes or absorbents to prevent migration and entry into sewers or streams. Stop leaks without risks if possible.

### 12. Disposal consideration

**Regional legislation (waste)** : Disposal must be done according to official regulations.

**Waste treatment methods** : Dispose of contents/container in accordance with licensed collector's sorting instructions.

**Sewage disposal recommendations** : Disposal must be done according to official regulations.

### 13. Handling and storage

**Precautions for safe handling** : Ensure good ventilation of the work station. Do not get in eyes, on skin, or on clothing. Wear personal protective equipment. Avoid breathing dust/fume/gas/mist/vapors/spray.

**Hygiene measures** : Wash contaminated clothing before reuse. Contaminated work clothing should not be allowed out of the workplace. Do not eat, drink or smoke when using this product. Always wash hands after handling the product.

# GPS Safety Summary

## 2-Ethylaniline

CL-4:PUBLIC

### 14. Classification and Labeling

Hazard pictograms (GHS US)

:



Signal word (GHS US)

: Danger

Hazard statements (GHS US)

: H301+H311 - Toxic if swallowed or in contact with skin

H315 - Causes skin irritation

H317 - May cause an allergic skin reaction

H319 - Causes serious eye irritation

H400 - Very toxic to aquatic life

H410 - Very toxic to aquatic life with long lasting effects

Precautionary statements (GHS US)

: P261 - Avoid breathing dust, fume, gas, mist, vapours, spray.

P264 - Wash hands, forearms and face thoroughly after handling.

P270 - Do not eat, drink or smoke when using this product.

P272 - Contaminated work clothing must not be allowed out of the workplace.

P273 - Avoid release to the environment.

P280 - Wear protective gloves.

P301+P310 - If swallowed: Immediately call a poison center or doctor.

P302+P352 - If on skin: Wash with plenty of water.

P305+P351+P338 - IF IN EYES: Rinse cautiously with water for several minutes. Remove contact lenses, if present and easy to do. Continue rinsing.

P312 - Call a poison center or doctor if you feel unwell.

P321 - Specific treatment (see supplemental first aid instruction on this label).

P330 - Rinse mouth.

P333+P313 - If skin irritation or rash occurs: Get medical advice or attention.

P337+P313 - If eye irritation persists: Get medical advice or attention.

P361+P364 - Take off immediately all contaminated clothing and wash it before reuse.

P362+P364 - Take off contaminated clothing and wash it before reuse.

P391 - Collect spillage.

P405 - Store locked up.

P501 - Dispose of contents and/or container to hazardous or special waste collection point, in accordance with local, regional, national and/or international regulations.

### 15. Conclusion

2-Ethylaniline is liquid or solid, depending on the room temperature. Products containing impurities can be liquid. It is Combustible substance, poorly flammable. Slightly soluble in water. Heavier than water. Acute or chronic health hazards result from the substance. The substance is hazardous to the aquatic environment. The substance can react dangerously with strong oxidizing agents, acids, chloroformic acid esters, acid anhydrides, acid chlorides. The exposure must be kept as minimum as possible by the use of appropriate risk management measures as suitable collective and personal protective equipment, good industrial hygiene practices and risk communication through appropriate training of workers.

### 16. Contact Information within company

#### Manufacturer

Aarti Industries Limited

Udyog Kshetra, 2nd Floor, Mulund Goregaon Link Road, Mulund (West)

400080 Mumbai - India

T +91-22-6797-6666 - F +91-22-2565 3234

info@aarti-industries.com - www.aarti-industries.com

# **GPS Safety Summary**

## **2-Ethylaniline**

**CL-4:PUBLIC**

---

This GPS safety summary is intended to give general information about the health, safety and environment and not intended to provide in-depth details. To obtain the most accurate and current information, consult the appropriate Safety Data Sheet (SDS) prior to use of the material named herein.