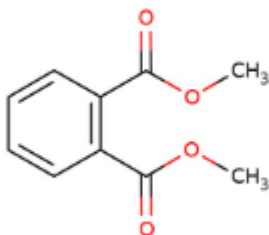


### 1. General Statement

Di Methyl Phthalate is a colourless, odourless liquid. It is a Combustible substance, poorly flammable. Slightly soluble in water. Heavier than water. Low or very low-volatile. Sensitive to light.

### 2. Chemical identity

Name : Di Methyl Phthalate  
 CAS number(s) : 131-11-3  
 EC number : 205-011-6  
 Molecular formula : C<sub>10</sub>H<sub>10</sub>O<sub>4</sub>  
 Structure :



### 3. Uses and Benefits

Di Methyl Phthalate is used in the following products: perfumes and fragrances, cosmetics and personal care products, coating products, air care products, washing & cleaning products, inks and toners, laboratory chemicals, pharmaceuticals, adhesives and sealants, fillers, putties, plasters, modelling clay, finger paints and polishes and waxes. Other release to the environment of this substance is likely to occur from: indoor use (e.g. machine wash liquids/detergents, automotive care products, paints and coating or adhesives, fragrances and air fresheners), outdoor use, indoor use in close systems with minimal release (e.g. cooling liquids in refrigerators, oil-based electric heaters) and outdoor use in close systems with minimal release (e.g. hydraulic liquids in automotive suspension, lubricants in motor oil and break fluids).

### 4. Physical / chemical properties

Property	Value
Physical state :	Liquid
Colour :	Colourless
Odour :	Odourless
pH :	No data available in the literature

# GPS Safety Summary

## Di Methyl Phthalate

CL-4:

PUBLIC

<b>Melting point</b>	0.36 °C (at 101 325 Pa)
Boiling point :	283.1 °C (1013 hPa)
Flash point :	154 °C (at 101 325 Pa)
<b>Density :</b>	1194 kg/m3 (20 °C)
Solubility in Water:	4000 mg/l at 25 °C

### 5. Health Effects

Effect Assessment	Result
<b>Acute toxicity (Oral / inhalation / dermal )</b>	NA
<b>Irritation / corrosion Skin / eye/ respiratory tract</b>	NA
<b>Respiratory or skin sensitisation</b>	NA
<b>Toxicity after repeated exposure Oral / inhalation / dermal</b>	NA
<b>Genotoxicity / Mutagenicity</b>	NA
<b>Carcinogenicity</b>	NA
<b>Toxicity for reproduction</b>	NA

### 6. Environmental Effects

Effect Assessment	Result
<b>Aquatic toxicity</b>	No
<b>Fate and behavior</b>	<b>Result</b>
<b>Persistence and degradability</b>	No additional information available
<b>Bioaccumulative potential</b>	No bioaccumulation data available.

### 7. Exposure

#### Human health

Dimethyl phthalate (DMP) must be expected to occur chiefly via the respiratory tract. Workers may be exposed during (un)loading, mixing, sampling, analysis or maintenance operations and particularly in case of batch processes. The exposure must be kept as minimum as possible by the use of appropriate risk management

# GPS Safety Summary

## Di Methyl Phthalate

CL-4:

PUBLIC

measures as suitable collective and personal protective equipment, good industrial hygiene practices and risk communication through appropriate training of workers. Careless handling or accidental spillage of the chemical could result in exposure to potentially hazardous levels of chemicals. Industrial workers should ensure that they follow the advice found in the extended safety data sheet (SDS).

### Environment

Care should be taken to avoid releases of these products to sewage, drainage systems and water bodies. Spillage shall be quickly collected in the event of an accidental release. More information about release measures and accidental release measures are available in the extended safety data sheet.

## 8. Risk Management Recommendations

### Human health measures

Organizational	A basic standard of occupational hygiene is recommended. Ensure operatives are well informed of the hazards and trained to minimise exposures. Ensure regular inspection and maintenance of equipment and machines. Handle and store according to the indications of the Safety Data Sheet.	
Protection	Eye protection:	Safety glasses
	Skin and body protection:	Wear suitable protective clothing
	Respiratory protection:	In case of insufficient ventilation, wear suitable respiratory equipment.
Engineering controls	Ensure good ventilation of the work station.	
Environment protective measures		
No information Available		

## 9. First-aid measures

**First-aid measures after inhalation:** Remove the person to fresh air and keep comfortable for breathing.

**First-aid measures after skin contact :**Wash skin with plenty of water.

**First-aid measures after eye contact :** Rinse eyes with water as a precaution.

**First-aid measures after ingestion :**Call a poison center or a doctor if you feel unwell.

# GPS Safety Summary

## Di Methyl Phthalate

PUBLIC

CL-4:

---

### 10. Fire-fighting measures

#### **Extinguishing media**

Suitable extinguishing media :Water spray. Dry powder. Foam. Carbon dioxide.

Unsuitable extinguishing media : Water (quick-acting extinguisher, reel); risk of puddle expansion. Water; risk of puddle expansion.

Special hazards arising from the substance or mixture

Hazardous decomposition products in case of fire :Upon combustion: CO and CO<sub>2</sub> are formed.

#### **Advice for firefighters**

Precautionary measures fire : Exposure to fire/heat: keep upwind. Exposure to fire/heat: seal off low-lying areas. Exposure to fire/heat: have neighbourhood close doors and windows.

Firefighting instructions :Fight fire from safe distance and protected location. Do not enter a fire area without proper protective equipment, including respiratory protection.

### 11. Accidental release measures

**Protective equipment** Do not attempt to take action without suitable protective equipment. For further information refer to section 8: "Exposure controls/personal protection".

**Environmental precautions:**Avoid release to the environment.

**For containment** :Absorb spilled material with sand or earth. Contain any spills with dikes or absorbents to prevent migration and entry into sewers or streams. Stop leak without risks if possible.

### 12. Disposal consideration

**Regional legislation (waste)** : Disposal must be done according to official regulations.

**Waste treatment methods** : Dispose of contents/container in accordance with licensed collector's sorting instructions.

**Sewage disposal recommendations** : Disposal must be done according to official regulations.

### 13. Handling and storage

**Precautions for safe handling** :Ensure good ventilation of the work station. Wear personal protective equipment.

# GPS Safety Summary

## Di Methyl Phthalate

CL-4:

PUBLIC

---

**Hygiene measures** :Do not eat, drink or smoke when using this product. Always wash hands after handling the product.

### 14. Classification and Labeling

**GHS US classification**

**Not classified**

### 15. Conclusion

Di Methyl Phthalate is a substance Substance is combustible Fire fighting equipment must be available. Release to the environment of this substance can occur from industrial use: formulation in materials, in the production of articles, formulation of mixtures, in processing aids at industrial sites and as processing aid. Other release to the environment of this substance is likely to occur from: indoor use in long-life materials with low release rate (e.g. flooring, furniture, toys, construction materials, curtains, foot-wear, leather products, paper and cardboard products, electronic equipment), outdoor use in long-life materials with low release rate (e.g. metal, wooden and plastic construction and building materials), indoor use (e.g. machine wash liquids/detergents, automotive care products, paints and coating or adhesives. Care should be taken to avoid releases of these products to sewage, drainage systems and water bodies. The exposure must be kept as minimum as possible by the use of appropriate risk management measures as suitable collective and personal protective equipment, good industrial hygiene practices and risk communication through appropriate training of workers.

### 16. Contact Information within company

#### **Manufacturer**

Aarti Industries Limited

Udyog Kshetra, 2nd Floor, Mulund Goregaon Link Road, Mulund (West)

400080 Mumbai - India

T +91-22-6797-6666 - F +91-22-2565 3234

info@aarti-industries.com - www.aarti-industries.com

This GPS safety summary is intended to give general information about the health, safety and environmental and not intended to provide in-depth details. To obtain the most accurate and current information, consult the appropriate Safety Data Sheet (SDS) prior to use of the material named herein.