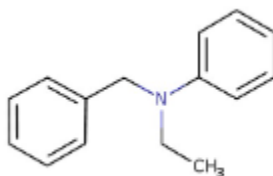


### 1. General Statements

Ethyl Benzyl Aniline is Colourless to Yellow oily liquid. It is a Combustible substance, poorly flammable. Practically insoluble in water. Low or very low-volatile. Acute or chronic health hazards result from the substance. The substance is hazardous to the aquatic environment.

### 2. Chemical identification.

Name : Ethyl Benzyl Aniline  
 CAS number(s) : 92-59-1  
 EC number : 202-169-8  
 Molecular formula : C<sub>15</sub>H<sub>17</sub>N  
 Structure :



### 3. Uses and Benefits

It is used as a dye manufacture.

### 4. Physical / chemical properties

Property	Value
Physical state :	Liquid
Colour :	Colourless to Yellow
Odour :	Odourless
pH :	NA
Melting point :	-34 to -30 °C
Boiling point :	291.3 °C Atm. press: 963 hPa
Flash point :	144.6 °C Atm. press: 980.9 hPa
Density :	1.024 g/m <sup>3</sup> at 20 °C
Solubility in Water:	4.513 mg/L at 25 °C

# GPS Safety Summary

## Ethyl Benzyl Aniline

CL-4:PUBLIC

### 5. Health Effects

Effect Assessment	Result
Acute toxicity (Oral / inhalation / dermal )	Harmful if swallowed,
Irritation / corrosion Skin / eye/ respiratory tract	NA
Respiratory or skin sensitisation	NA
Toxicity after repeated exposure Oral / inhalation / dermal	NA
Genotoxicity / Mutagenicity	NA
Carcinogenicity	NA
Toxicity for reproduction	NA

### 6. Environmental Effects

Effect Assessment	Result
Aquatic toxicity	No
Fate and behavior	Result
Persistence and degradability	No additional information available
Bioaccumulative potential	No additional information available

### 7. Exposure

#### Human health

Ethyl Benzyl Aniline is toxic if swallowed,.The exposure must be kept as minimum as possible by the use of appropriate risk management measures suitable collective and personal protective equipment, good industrial hygiene practices and risk communication through appropriate training of workers.Careless handling or accidental spillage of the chemical could result in exposure to potentially hazardous levels of chemicals.Industrial workers should ensure that they follow the advice found in the extended safety data sheet (SDS).

#### Environment

Care should be taken to avoid releases of these products to sewage, drainage systems and water bodies. Spillage shall be quickly collected in the event of an accidental release. More information about release measures and accidental release measures are available in the extended safety data sheet.

# GPS Safety Summary

## Ethyl Benzyl Aniline

CL-4:PUBLIC

### 8. Risk Management Recommendations

#### Human health measures

Organizational	A basic standard of occupational hygiene is recommended. Ensure operatives are well informed of the hazards and trained to minimise exposures. Ensure regular inspection and maintenance of equipment and machines. Handle and store according to the indications of the Safety Data Sheet.	
Protection	Eye protection:	Safety glasses
	Skin and body protection:	Wear suitable protective clothing
	Respiratory protection:	In case of insufficient ventilation, wear suitable respiratory equipment.
Engineering controls	Ensure good ventilation of the work station.	
Environment protective measures		
Avoid release to the environment		

### 9. First-aid measures

**First-aid measures after inhalation:**Remove the person to fresh air and keep them comfortable for breathing.

**First-aid measures after skin contact::**Wash skin with plenty of water.

**First-aid measures after eye contact:**Rinse eyes with water as a precaution.

**First-aid measures after ingestion :**Rinse mouth. Call a poison center or a doctor if you feel unwell.

### 10. Fire-fighting measures

#### Extinguishing media

**Suitable extinguishing media:**Water spray. Dry powder. Foam. Carbon dioxide.

**Unsuitable extinguishing media :**Water (quick-acting extinguisher, reel); risk of puddle expansion. Water; risk of puddle expansion.

#### Special hazards arising from the substance or mixture

**Hazardous decomposition products in case of fire:**Toxic fumes may be released.

#### Advice for firefighters

**Precautionary measures fire:** B liquid or melting substances.

# GPS Safety Summary

## Ethyl Benzyl Aniline

CL-4:PUBLIC

**Firefighting instructions:** In the case of a fire hazardous substances can be released. Carbon monoxide and carbon dioxide. Nitrous gases (nitric oxides). Wear self-contained breathing apparatus and special tightly sealed suit.

### 11. Accidental release measures

**Protective equipment :** Protective clothing. Protective goggles. Wear recommended personal protective equipment.

**Environmental precautions:** Avoid release to the environment.

**For containment :** Take up liquid spill into absorbent material. Dispose of materials or solid residues at an authorized site.

### 12. Disposal consideration

**Regional legislation (waste) :** Disposal must be done according to official regulations.

**Waste treatment methods :** Dispose of contents/container in accordance with licensed collector's sorting instructions.

**Sewage disposal recommendations :** Disposal must be done according to official regulations.

### 13. Handling and storage

**Precautions for safe handling:** Ensure good ventilation of the work station. Wear personal protective equipment.

**Hygiene measures :** Do not eat, drink or smoke when using this product. Always wash hands after handling the product.

### 14. Classification and Labeling

Hazard pictograms (GHS US)

:



Signal word (GHS US)

Hazard statements (GHS US)

Precautionary statements (GHS US)

: Warning

: H302 - Harmful if swallowed

: P264 - Wash hands, forearms and face thoroughly after handling.

P270 - Do not eat, drink or smoke when using this product.

P301+P312 - If swallowed: Call a poison center or doctor if you feel unwell.

P330 - Rinse mouth.

P501 - Dispose of contents/container to hazardous or special waste collection point, in accordance with local, regional, national and/or international regulation.

# GPS Safety Summary

## Ethyl Benzyl Aniline

CL-4:PUBLIC

---

### 15. Conclusion

Ethyl Benzyl Aniline is Colourless to Yellow oily liquid. It is a Combustible substance, poorly flammable. Practically insoluble in water. Low or very low-volatile. Acute or chronic health hazards result from the substance. The substance is hazardous to the aquatic environment. Avoid contamination with oxidising agents i.e. nitrates, oxidising acids, chlorine bleaches, pool chlorine etc. as ignition may result. Care should be taken to avoid releases of these products to sewage, drainage systems and water bodies. The exposure must be kept as minimum as possible by the use of appropriate risk management measures as suitable collective and personal protective equipment, good industrial hygiene practices and risk communication through appropriate training of workers.

### 16. Contact Information within company

#### **Manufacturer**

Aarti Industries Limited

Udyog Kshetra, 2nd Floor, Mulund Goregaon Link Road, Mulund (West)

400080 Mumbai - India

T +91-22-6797-6666 - F +91-22-2565 3234

info@aarti-industries.com - www.aarti-industries.com

This GPS safety summary is intended to give general information about the health, safety and environment and not intended to provide in-depth details. To obtain the most accurate and current information, consult the appropriate Safety Data Sheet (SDS) prior to use of the material named herein.