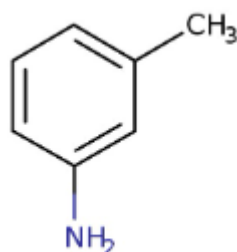


### 1. General Statement

Meta Toluidine is an Solid amino compound, Combustible substance, poorly flammable. Slightly soluble in water. Acute or chronic health hazards result from the substance. The substance is hazardous to the aquatic environment.

### 2. Chemical identity

Name : Meta Toluidine  
 CAS number(s) : 108-44-1  
 EC number : 203-583-1  
 Molecular formula : C<sub>7</sub>H<sub>9</sub>N  
 Structure :



### 3. Uses and Benefits

Meta Toluidine is used as an industrial use resulting in manufacture of another substance (use of intermediates). It is used for the manufacture of and chemicals. It is used as an intermediate step in further manufacturing of another substance (use of intermediates) and manufacturing of the substance.

### 4. Physical / chemical properties

Property	Value
Physical state :	Liquid
Colour :	Colourless to light yellow On exposure to air: yellow to brown
Odour :	Aromatic odour Amine-like odour
pH :	9.3 (10 %)
Melting point	-31 °C
Boiling point :	203 °C (1013 hPa)
Flash point :	85 °C (Closed cup, 1013 hPa)

# GPS Safety Summary

## Meta Toluidine

CL-4: PUBLIC

Density :	989 kg/m3 (20 °C)
Solubility in Water:	1.5 g/100ml

### 5. Health Effects

Effect Assessment	Result
Acute toxicity (Oral / inhalation / dermal )	Toxic if swallowed.Toxic in contact with skin.Toxic if inhaled.
Irritation / corrosion Skin / eye/ respiratory tract	NA
Respiratory or skin sensitisation	NA
Toxicity after repeated exposure Oral / inhalation / dermal	May cause damage to organs through prolonged or repeated exposure.
Genotoxicity / Mutagenicity	NA.
Carcinogenicity	NA
Toxicity for reproduction	NA

### 6. Environmental Effects

Effect Assessment	Result
Aquatic toxicity	Yes
Fate and behavior	Result
Persistence and degradability	Readily biodegradable in water.
Bioaccumulative potential	Low potential for bioaccumulation (BCF < 500).

### 7. Exposure

#### Human health

The substance Toxic if swallowed.Toxic in contact with skin.Toxic if inhaled. It May cause damage to organs through prolonged or repeated exposure.The most likely route of human exposure (workers) is through skin. In industrial settings, ingestion is not an anticipated route of exposure. Workers may be exposed during (un)loading, mixing, sampling, analysis or maintenance operations and particularly in case of batch processes.The exposure must be kept as minimum as possible by the use of appropriate risk management measures as suitable collective and personal protective equipment, good industrial hygiene practices and risk communication through appropriate training of workers.Careless handling or accidental spillage of the chemical

# GPS Safety Summary

## Meta Toluidine

CL-4: PUBLIC

could result in exposure to potentially hazardous levels of chemicals. Industrial workers should ensure that they follow the advice found in the extended safety data sheet (SDS).

### Environment

Care should be taken to avoid releases of these products to sewage, drainage systems and water bodies. Spillage shall be quickly collected in the event of an accidental release. More information about release measures and accidental release measures are available in the extended safety data sheet.

## 8. Risk Management Recommendations

### Human health measures

<b>Organizational</b>	A basic standard of occupational hygiene is recommended. Ensure operatives are well informed of the hazards and trained to minimise exposures. Ensure regular inspection and maintenance of equipment and machines. Handle and store according to the indications of the Safety Data Sheet.	
<b>Protection</b>	Eye protection:	Face shield (EN 166)
	Skin and body protection:	Protective clothing (EN 14605 or EN 13034)
	Respiratory protection:	Full face mask with filter type A. High vapour/gas concentration: self-contained breathing apparatus (EN 136 + EN 137)
<b>Engineering controls</b>	No additional information available	
<b>Environment protective measures</b>		
No additional information available		

## 9. First-aid measures

**First-aid measures after inhalation** :Remove victims into fresh air. In case of respiratory problems, consult a doctor/medical service.

**First-aid measures after skin contact** : If possible, wipe up/dry remove chemical. Then rinse/shower immediately for 30 minutes with(lukewarm) water. Cut clothing; never remove burnt clothing from the wound. Do not give any pain medication. Consult a doctor/medical service.

**First-aid measures after eye contact** :Rinse immediately with plenty of water. Remove contact lenses, if present and easy to do.Continue rinsing. If irritation persists, consult a doctor/medical service.

**First-aid measures after ingestion** : Rinse mouth with water. If you feel unwell, consult a doctor/medical service. Do not wait for symptoms to occur to consult the Poison Center.

### 10. Fire-fighting measures

#### **Extinguishing media**

Suitable extinguishing media Quick-acting ABC powder extinguisher. Quick-acting BC powder extinguisher. Quick-acting classB foam extinguisher. Quick-acting CO2 extinguisher. Class B foam (alcohol-resistant). Water spray if the puddle cannot expand.

Unsuitable extinguishing media :Water (quick-acting extinguisher, reel); risk of puddle expansion. Water; risk of puddle expansion.

Special hazards arising from the substance or mixture

Hazardous decomposition products in case of fire :On burning: release of toxic and corrosive gases/vapours (nitrous vapours, carbon monoxide -carbon dioxide).

#### **Advice for firefighters**

Precautionary measures fire : Exposure to fire/heat: keep upwind. Exposure to fire/heat: consider evacuation. Exposure to fire/heat: seal off low-lying areas. Exposure to fire/heat: have neighbourhood close doors and windows.

Firefighting instructions : Dilute toxic gases with water spray. Take account of toxic/corrosive precipitation water. Take account of toxic fire-fighting water. Use water moderately and if possible collect or contain it.

### 11. Accidental release measures

**Protective equipment** :Gloves (EN 374). Face shield (EN 166). Protective clothing (EN 14605 or EN 13034). Large spills in enclosed spaces: self-contained breathing apparatus (EN 136 + EN 137). Large spills/in enclosed spaces: gas-tight suit (EN 943).

**Environmental precautions:** Prevent soil and water pollution. Prevent spreading in sewers.

**For containment** : Contain released product, collect/pump into suitable containers. Plug the leak, cut off the supply.Dam up the liquid spill. Heat exposure: dilute toxic gas/vapour with water spray. Take account of toxic/corrosive precipitation water.

### 12. Disposal consideration

**Regional legislation (waste)** : Disposal must be done according to official regulations.

**Waste treatment methods** : Dispose of contents/container in accordance with licensed collector's sorting instructions.

**Sewage disposal recommendations** : Disposal must be done according to official regulations.

### 13. Handling and storage

# GPS Safety Summary

## Meta Toluidine

CL-4: PUBLIC

**Precautions for safe handling:** At temperature > flashpoint: use spark-/explosionproof appliances. Keep away from naked flames/heat. In a finely divided state: use spark-/explosionproof appliances. Finely divided: keep away from ignition sources/sparks. Measure the concentration in the air regularly. Carry operations in the open/under local exhaust/ventilation or with respiratory protection. Comply with the legal requirements. Clean contaminated clothing. Keep the container tightly closed. Do not discharge the waste into the drain.

**Hygiene measures :**Observe strict hygiene.

## 14. Classification and Labeling

Hazard pictograms (GHS US)



Signal word (GHS US)

Hazard statements (GHS US)

Precautionary statements (GHS US)

- : Danger
- : H301+H311+H331 - Toxic if swallowed, in contact with skin or if inhaled
- H373 - May cause damage to organs through prolonged or repeated exposure
- : P260 - Do not breathe dust/fume/gas/mist/vapors/spray.
- P261 - Avoid breathing dust/fume/gas/mist/vapors/spray.
- P264 - Wash hands, forearms and face thoroughly after handling.
- P270 - Do not eat, drink or smoke when using this product.
- P271 - Use only outdoors or in a well-ventilated area.
- P280 - Wear protective gloves/protective clothing/eye protection/face protection.
- P301+P310 - If swallowed: Immediately call a poison center or doctor.
- P302+P352 - If on skin: Wash with plenty of water.
- P304+P340 - If inhaled: Remove person to fresh air and keep comfortable for breathing.
- P311 - Call a poison center or doctor.
- P312 - Call a poison center or doctor if you feel unwell.
- P314 - Get medical advice/attention if you feel unwell.
- P321 - Specific treatment (see supplemental first aid instruction on this label).
- P322 - Specific treatment (see supplemental first aid instruction on this label)
- P330 - Rinse mouth.
- P361+P364 - Take off immediately all contaminated clothing and wash it before reuse.
- P403+P233 - Store in a well-ventilated place. Keep container tightly closed.
- P405 - Store locked up.
- P501 - Dispose of contents/container to hazardous or special waste collection point, in accordance with local regional national and/or international regulation

## 15. Conclusion

Meta Toluidine is toxic if swallowed.Toxic in contact with skin.Toxic if inhaled. It May cause damage to organs through prolonged or repeated exposure.Care should be taken to avoid releases of these products to sewage, drainage systems and water bodies.The exposure must be kept as minimum as possible by the use of appropriate risk management measures as suitable collective and personal protective equipment, good industrial hygiene practices and risk communication through appropriate training of workers.

## 16. Contact Information within company

### **Manufacturer**

Aarti Industries Limited

# **GPS Safety Summary**

## **Meta Toluidine**

**CL-4: PUBLIC**

---

Udyog Kshetra, 2nd Floor, Mulund Goregaon Link Road, Mulund (West)

400080 Mumbai - India

T +91-22-6797-6666 - F +91-22-2565 3234

info@aarti-industries.com - www.aarti-industries.com

This GPS safety summary is intended to give general information about the health, safety and environmental and not intended to provide in-depth details. To obtain the most accurate and current information, consult the appropriate Safety Data Sheet (SDS) prior to use of the material named herein.