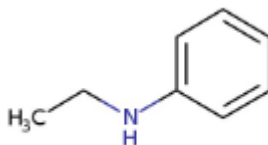


### 1. General Statement

N-Ethyl Aniline is an Amino compound, a weak oily, colourless liquid. It is a combustible substance, poorly flammable (flash point > 60 up to 93 °C). Vapours may form explosive mixtures with air when the substance is heated above its flash point. Slightly soluble in water. Low or very low-volatile. Acute or chronic health hazards result from the substance.

### 2. Chemical identity

Name : N-Ethyl Aniline  
CAS number(s) : 103-69-5  
EC number : 203-135-5  
Molecular formula : C<sub>8</sub>H<sub>11</sub>N  
Structure :



### 3. Uses and Benefits

N-Ethyl Aniline is used as a building block in the synthesis of various dyes and pigments. It serves as an intermediate in the production of certain pharmaceuticals and biologically active compounds. It can be used as a stabilizer in the production of explosives.

### 4. Physical / chemical properties

Property	Value
Physical state :	Liquid
Colour :	Colourless
Odour :	Sweetish aniline-like odour.
pH :	No data available
Melting point	63.5 °C Atm press 101.3 kPa
Boiling point :	205.6 °C Atm press (1013.25 hPa)
Flash point :	85 °C (Closed cup, 1013.25 hPa)
Density :	0.96 – 0.9672 Type: 'relative density' Temp.: 20 °C

# GPS Safety Summary

## N-Ethyl Aniline

CL-4: PUBLIC

Solubility in Water:	No data available
----------------------	-------------------

### 5. Health Effects

Effect Assessment	Result
Acute toxicity (Oral / inhalation / dermal )	Toxic if swallowed, in contact with skin or if inhaled.
Irritation / corrosion Skin / eye/ respiratory tract	NA
Respiratory or skin sensitisation	NA
Toxicity after repeated exposure Oral / inhalation / dermal	May cause damage to organs through prolonged or repeated exposure.
Genotoxicity / Mutagenicity	NA.
Carcinogenicity	NA.
Toxicity for reproduction	NA

### 6. Environmental Effects

Effect Assessment	Result
Aquatic toxicity	No
Fate and behavior	Result
Persistence and degradability	No additional information available.
Bioaccumulative potential	No additional information available.

### 7. Exposure

#### Human health

The substance may cause damage to organs through prolonged or repeated exposure. Toxic if swallowed, in contact with skin or if inhaled.

The most likely route of human exposure (workers) is through skin. In industrial settings, ingestion is not an anticipated route of exposure. Workers may be exposed during (un)loading, mixing, sampling, analysis or maintenance operations and particularly in case of batch processes. The exposure must be kept as minimum as possible by the use of appropriate risk management measures as suitable collective and personal protective equipment, good industrial hygiene practices and risk communication through appropriate training of workers. Careless handling or accidental spillage of the chemical could result in exposure to potentially hazardous levels of chemicals. Industrial workers should ensure that they follow the advice found in the extended safety data sheet (SDS).

# GPS Safety Summary

## N-Ethyl Aniline

CL-4: PUBLIC

### Environment

Care should be taken to avoid releases of these products to sewage, drainage systems and water bodies. Spillage shall be quickly collected in the event of an accidental release. More information about release measures and accidental release measures are available in the extended safety data sheet.

### 8. Risk Management Recommendations

#### Human health measures

Organizational	A basic standard of occupational hygiene is recommended. Ensure operatives are well informed of the hazards and trained to minimise exposures. Ensure regular inspection and maintenance of equipment and machines. Handle and store according to the indications of the Safety Data Sheet.	
Protection	Eye protection:	Wear eye protection, safety glasses
	Skin and body protection:	Wear foot protection
	Respiratory protection:	[In case of inadequate ventilation] wear respiratory protection.
Engineering controls	Ensure good ventilation of the work station.	
Environment protective measures		
Ensure good ventilation of the work.		

### 9. First-aid measures

**First-aid measures after inhalation** : Remove the person in the fresh air and keep comfortable for breathing if you feel unwell seek medical advice, take medical advice.

**First-aid measures after skin contact** : After contact with skin, take off immediately all contaminated clothing, and wash immediately with plenty of water. Be careful, the product may remain trapped under clothing, footwear or wrist-watch. Get immediate medical advice/attention. Wash skin with plenty of water. Remove/Take off immediately all contaminated clothing.

**First-aid measures after eye contact** : In case of contact with eyes, rinse immediately with plenty of water and seek medical advice. Remove contact lenses, if present and easy to do. Continue rinsing. Get medical advice/attention. Rinse eyes with water as a precaution.

**First-aid measures after ingestion** : If swallowed, seek medical advice immediately and show this container or label. If you feel unwell, seek medical advice. Consult a doctor/medical service if you feel unwell. Rinse mouth. Call a physician immediately.

# GPS Safety Summary

## N-Ethyl Aniline

CL-4: PUBLIC

---

### 10. Fire-fighting measures

#### **Extinguishing media**

Suitable extinguishing media :dry chemical powder, alcohol-resistant foam, carbon dioxide (CO2). Water spray. Dry powder. Foam. Carbon dioxide. .

Unsuitable extinguishing media :Water (quick-acting extinguisher, reel); risk of puddle expansion. Water; risk of puddle expansion.

Special hazards arising from the substance or mixture

Hazardous decomposition products in case of fire :On burning: release of toxic and corrosive gases/vapours (nitrous vapours).

#### **Advice for firefighters**

Precautionary measures fire : Eliminate all ignition sources if safe to do so. Keep away from combustible materials. Keep the container closed when not in use. Stop leak if safe to do so.

Firefighting instructions : Fight fire from safe distance and protected location. Do not enter a fire area without proper protective equipment, including respiratory protection.

### 11. Accidental release measures

**Protective equipment** :Gloves. Protective clothing. Protective goggles. Wear recommended personal protective equipment.

**Environmental precautions:** Avoid release to the environment. Avoid discharge to the atmosphere. Do not allow drains or water courses.

**For containment** : Contain released product, collect/pump into suitable containers. Plug the leak, cut off the supply.Dam up the liquid spill. Heat exposure: dilute toxic gas/vapour with water spray.

### 12. Disposal consideration

**Regional legislation (waste)** : Disposal must be done according to official regulations.

**Waste treatment methods** : Dispose of contents/container in accordance with licensed collector's sorting instructions.

**Sewage disposal recommendations** : Disposal must be done according to official regulations.

### 13. Handling and storage

**Precautions for safe handling** : Avoid contact with skin, eyes and clothing. Clean contaminated clothing. Eliminate all ignition sources if safe to do so. Handle carefully. Keep away from heat, hot surfaces, sparks, open flames and other ignition sources. No smoking. Wear personal protective equipment. Do not breathe

# GPS Safety Summary

## N-Ethyl Aniline

CL-4: PUBLIC

dust/fume/gas/mist/vapors/spray. Do not get in eyes, on skin, or on clothing. Use only outdoors or in a well-ventilated area

**Hygiene measures** :Wear personal protective equipment. Wash contaminated cloth before reuse. Do not eat, drink or smoke when using these products. Always wash hands after handling the product.

### 14. Classification and Labeling

Hazard pictograms (GHS US)



Signal word (GHS US)

: Danger

Hazard statements (GHS US)

: H227 - Combustible liquid

H301+H311+H331 - Toxic if swallowed, in contact with skin or if inhaled

H373 - May cause damage to organs through prolonged or repeated exposure

Precautionary statements (GHS US)

: P210 - Keep away from heat, hot surfaces, sparks, open flames and other ignition sources. No smoking.

P260 - Do not breathe dust, fume, gas, mist, spray, vapors.

P261 - Avoid breathing dust, fume, gas, mist, spray, vapors.

P264 - Wash hands, forearms and face thoroughly after handling.

P270 - Do not eat, drink or smoke when using this product.

P271 - Use only outdoors or in a well-ventilated area.

P280 - Wear protective clothing, eye protection, face protection, protective gloves.

P301+P310 - If swallowed: Immediately call a POISON CENTER, a doctor.

P302+P352 - If on skin: Wash with plenty of water.

P304+P340 - If inhaled: Remove person to fresh air and keep comfortable for breathing.

P311 - Call a POISON CENTER, a doctor.

P312 - Call a POISON CENTER, a doctor if you feel unwell.

P314 - Get medical advice/attention if you feel unwell.

P321 - Specific treatment (see supplemental first aid instruction on this label).

P322 - Specific treatment (see supplemental first aid instruction on this label)

P330 - Rinse mouth.

P361+P364 - Take off immediately all contaminated clothing and wash it before reuse.

P370+P378 - In case of fire: Use media other than water to extinguish.

P403+P233 - Store in a well-ventilated place. Keep container tightly closed.

P403+P235 - Store in a well-ventilated place. Keep cool.

P405 - Store locked up.

P501 - Dispose of contents/container to hazardous or special waste collection point, in accordance with local, regional, national and/or international regulation.

### 15. Conclusion

N-Ethyl Aniline is an Amino compound, a weak oily, colourless liquid It is a combustible substance, poorly flammable(flash point > 60 up to 93 °C).Vapours may form explosive mixtures with air when the substance is heated above its flash point.Slightly soluble in water.Low or very low-volatile.Acute or chronic health hazards result from the substance.The substance may cause damage to organs through prolonged or repeated exposure.Toxic if swallowed, in contact with skin or if inhaled.

Care should be taken to avoid releases of these products to sewage, drainage systems and water bodies.

The exposure must be kept as minimum as possible by the use of appropriate risk management measures as suitable collective and personal protective equipment, good industrial hygiene practices and risk communication through appropriate training of workers.

## GPS Safety Summary

### N-Ethyl Aniline

CL-4: PUBLIC

---

#### 16. Contact Information within company

##### **Manufacturer**

Aarti Industries Limited

Udyog Kshetra, 2nd Floor, Mulund Goregaon Link Road, Mulund (West)

400080 Mumbai - India

T +91-22-6797-6666 - F +91-22-2565 3234

info@aarti-industries.com - www.aarti-industries.com

This GPS safety summary is intended to give general information about the health, safety and environmental and not intended to provide in-depth details. To obtain the most accurate and current information, consult the appropriate Safety Data Sheet (SDS) prior to use of the material named herein.