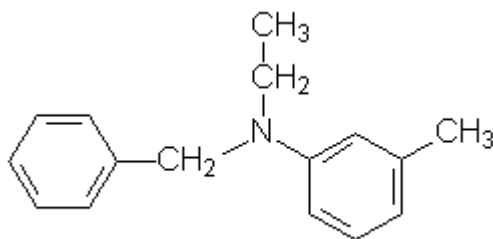


### 1. General Statement

N Ethyl N Benzyl Meta Toluidine is a Combustible substance, poorly flammable (flash point > 60 up to 93 °C). Vapours may form explosive mixtures with air when the substance is heated above its flash point. Acute or chronic health hazards result from the substance. The substance is hazardous to the aquatic environment.

### 2. Chemical identity

Name : N Ethyl N Benzyl Meta Toluidine  
CAS number(s) : 119-94-8  
EC number : 204-359-6  
Molecular formula : C<sub>16</sub>H<sub>19</sub>N  
Structure :



### 3. Uses and Benefits

N Ethyl N Benzyl Meta Toluidine is used as an intermediate in the manufacture of dyes, particularly disperse dyes, TPM Acid Dyes, and TPM Azo Dyes).

### 4. Physical / chemical properties

Property	Value
Physical state :	Liquid
Colour :	Colourless
Odour :	No data available
pH :	No data available in the literature
Melting point	No data available
Boiling point :	161 – 162 °C
Flash point :	77.2 °C
Density :	0.77 g/cm <sup>3</sup>

## GPS Safety Summary

### N Ethyl N Benzyl Meta Toluidine

CL-4: PUBLIC

Solubility in Water:	No data available
----------------------	-------------------

#### 5. Health Effects

Effect Assessment	Result
Acute toxicity (Oral / inhalation / dermal )	Toxic if swallowed, Toxic in contact with skin, Toxic if inhaled
Irritation / corrosion Skin / eye/ respiratory tract	NA
Respiratory or skin sensitisation	NA
Toxicity after repeated exposure Oral / inhalation / dermal	NA.
Genotoxicity / Mutagenicity	NA.
Carcinogenicity	NA
Toxicity for reproduction	NA

#### 6. Environmental Effects

Effect Assessment	Result
Aquatic toxicity	Yes
Fate and behavior	Result
Persistence and degradability	No additional information available
Bioaccumulative potential	No additional information available

#### 7. Exposure

##### Human health

Toxic if swallowed, Toxic in contact with skin, Toxic if inhaled. Occupational medical prevention has to be offered when, conducting activities with this substance, an exposure cannot be excluded. Obligatory prophylaxis: The employer shall arrange occupational medical prophylaxis if, exerting activities with this substance, skin contact cannot be excluded. The most likely route of human exposure (workers) is through skin. In industrial settings, ingestion is not an anticipated route of exposure. Workers may be exposed during (un)loading, mixing, sampling, analysis or maintenance operations and particularly in case of batch processes. The exposure must be kept as minimum as possible by the use of appropriate risk management measures as suitable collective

## GPS Safety Summary

### N Ethyl N Benzyl Meta Toluidine

CL-4: PUBLIC

and personal protective equipment, good industrial hygiene practices and risk communication through appropriate training of workers. Careless handling or accidental spillage of the chemical could result in exposure to potentially hazardous levels of chemicals. Industrial workers should ensure that they follow the advice found in the extended safety data sheet (SDS).

#### Environment

Care should be taken to avoid releases of these products to sewage, drainage systems and water bodies. Spillage shall be quickly collected in the event of an accidental release. More information about release measures and accidental release measures are available in the extended safety data sheet.

### 8. Risk Management Recommendations

#### Human health measures

Organizational	A basic standard of occupational hygiene is recommended. Ensure operatives are well informed of the hazards and trained to minimise exposures. Ensure regular inspection and maintenance of equipment and machines. Handle and store according to the indications of the Safety Data Sheet.	
Protection	Eye protection:	Safety glasses
	Skin and body protection:	Wear suitable protective clothing
	Respiratory protection:	Wear respiratory protection..
Engineering controls	Ensure good ventilation of the work station.	
Environment protective measures		
Avoid release to the environment.		

### 9. First-aid measures

**First-aid measures after inhalation** :Remove person to fresh air and keep comfortable for breathing. Take medical advice.

**First-aid measures after skin contact** : Wash skin with plenty of water. Remove/Take off immediately all contaminated clothing.

**First-aid measures after eye contact** :Rinse eyes with water as a precaution.

**First-aid measures after ingestion** : Rinse mouth. Call a physician immediately.

# GPS Safety Summary

## N Ethyl N Benzyl Meta Toluidine

CL-4: PUBLIC

---

### 10. Fire-fighting measures

#### **Extinguishing media**

Suitable extinguishing media: Water spray. Dry powder. Foam. Carbon dioxide.

Unsuitable extinguishing media : Water (quick-acting extinguisher, reel); risk of puddle expansion. Water; risk of puddle expansion.

Special hazards arising from the substance or mixture

Hazardous decomposition products in case of fire : Toxic fumes may be released.

#### **Advice for firefighters**

Precautionary measures fire : Exposure to fire/heat: consider evacuation.

Firefighting instructions : Fight fire from safe distance and protected location. Do not enter a fire area without proper protective equipment, including respiratory protection.

### 11. Accidental release measures

**Protective equipment** : Protective clothing. Protective goggles. Wear recommended personal protective equipment.

**Environmental precautions:** Avoid release to the environment.

For containment : Avoid contact with clothing. Contaminated clothes must be exchanged and cleaned carefully.

### 12. Disposal consideration

**Regional legislation (waste)** : Disposal must be done according to official regulations.

**Waste treatment methods** : Dispose of contents/container in accordance with licensed collector's sorting instructions.

**Sewage disposal recommendations** : Disposal must be done according to official regulations.

### 13. Handling and storage

**Precautions for safe handling:** Do not get in eyes, on skin, or on clothing. Wear personal protective equipment. Use only outdoors or in a well-ventilated area. Avoid breathing dust/fume/gas/mist/vapors/spray.

**Hygiene measures** Wash contaminated clothing before reuse. Do not eat, drink or smoke when using this product. Always wash hands after handling the product.

# GPS Safety Summary

## N Ethyl N Benzyl Meta Toluidine

CL-4: PUBLIC

---

### 14. Classification and Labeling

Hazard pictograms (GHS US)



Signal word (GHS US)

: Danger

Hazard statements (GHS US)

: H301+H311+H331 - Toxic if swallowed, in contact with skin or if inhaled

Precautionary statements (GHS US)

: P261 - Avoid breathing dust/fume/gas/mist/vapors/spray.

P264 - Wash hands, forearms and face thoroughly after handling.

P270 - Do not eat, drink or smoke when using this product.

P271 - Use only outdoors or in a well-ventilated area.

P280 - Wear protective gloves/protective clothing/eye protection/face protection.

P301+P310 - If swallowed: Immediately call a poison center or doctor.

P302+P352 - If on skin: Wash with plenty of water.

P304+P340 - If inhaled: Remove person to fresh air and keep comfortable for breathing.

P311 - Call a poison center or doctor.

P312 - Call a poison center or doctor if you feel unwell.

P321 - Specific treatment (see supplemental first aid instruction on this label).

P322 - Specific treatment (see supplemental first aid instruction on this label)

P330 - Rinse mouth.

P361+P364 - Take off immediately all contaminated clothing and wash it before reuse.

P403+P233 - Store in a well-ventilated place. Keep container tightly closed.

P405 - Store locked up.

P501 - Dispose of contents/container to hazardous or special waste collection point, in accordance with local, regional, national and/or international regulation.

### 15. Conclusion

N Ethyl N Benzyl Meta Toluidine substance is toxic if swallowed, is toxic in contact with skin and is toxic if inhaled..Care should be taken to avoid releases of these products to sewage, drainage systems and water bodies. The exposure must be kept as minimum as possible by the use of appropriate risk management measures as suitable collective and personal protective equipment, good industrial hygiene practices and risk communication through appropriate training of workers.

### 16. Contact Information within company

#### **Manufacturer**

Aarti Industries Limited

Udyog Kshetra, 2nd Floor, Mulund Goregaon Link Road, Mulund (West)

400080 Mumbai - India

T +91-22-6797-6666 - F +91-22-2565 3234

info@aarti-industries.com - www.aarti-industries.com

This GPS safety summary is intended to give general information about the health, safety and environmental and not intended to provide in-depth details. To obtain the most accurate and current

## **GPS Safety Summary**

### **N Ethyl N Benzyl Meta Toluidine**

**CL-4: PUBLIC**

---

information, consult the appropriate Safety Data Sheet (SDS) prior to use of the material named herein.