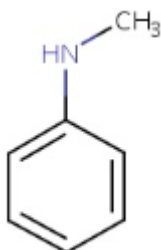


1. General Statement

Combustible substance, poorly flammable. Slightly soluble in water. Non volatile. Low or very low-volatile. Sensitive to air. Acute or chronic health hazards result from the substance. The substance is hazardous to the aquatic environment.

2. Chemical identity

Name : N-Methyl Aniline
CAS number : 100-61-8
EC number : 202-870-9
Molecular formula : C₇H₉N
Structure :



3. Uses and Benefits

N-Methyl Aniline is used in the manufacture of bulk, large scale chemicals (including petroleum products). Manufacture of textiles, leather, fur. It is used in the manufacture of fine chemicals.

4. Physical / chemical properties

Property	Value
Physical state :	Liquid.
Colour :	Yellow-orange.
Odour :	Anime-like odour. Mild odour.
pH :	7.45 (1 vol %, 24 °C)
Melting point	-57 °C
Boiling point :	195.6°C (384.1°F)
Flash point :	Closed cup: 78.85°C (173.9°F)
Density :	Not available Density : 0.989 g/cm ³ Type: 'density' Temp.: 20 °C

GPS Safety Summary

N-Methyl Aniline

CL-4: PUBLIC

Solubility in Water:	5.62 g/100ml (20 °C)
----------------------	----------------------

5. Health Effects

Effect Assessment	Result
Acute toxicity (Oral / inhalation / dermal)	Toxic if swallowed. Toxic in contact with skin.Toxic if inhaled
Irrit/ corrosion Skin / eye/ respiratory tractation	NA
Respiratory or skin sensitisation	NA
Toxicity after repeated exposure Oral / inhalation / dermal	May cause damage to organs through prolonged or repeated exposure.
Genotoxicity / Mutagenicity	NA
Carcinogenicity	NA
Toxicity for reproduction	NA

6. Environmental Effects

Effect Assessment	Result
Aquatic toxicity	Yes
Fate and behavior	Result
Persistence and degradability	No additional information available.
Bioaccumulative potential	No additional information available.

7. Exposure

Human health

N-Methyl Aniline is Toxic if swallowed. Toxic in contact with skin.Toxic if inhaled

The probability of exposure to workers is expected to be low because this product is manufactured in an enclosed controlled environment and is transported in well sealed containers. Workers may be exposed during (un)loading, mixing, sampling, analysis or maintenance operations and particularly in case of batch processes.The exposure must be kept as minimum as possible by the use of appropriate risk management measures as suitable collective and personal protective equipment, good industrial hygiene practices and risk communication through appropriate training of workers.Careless handling or accidental spillage of the chemical

GPS Safety Summary

N-Methyl Aniline

CL-4: PUBLIC

could result in exposure to potentially hazardous levels of chemicals. Industrial workers should ensure that they follow the advice found in the extended safety data sheet (SDS).

Environment

Care should be taken to avoid releases of these products to sewage, drainage systems and water bodies. Spillage shall be quickly collected in the event of an accidental release. More information about release measures and accidental release measures are available in the extended safety data sheet.

8. Risk Management Recommendations

Human health measures

Organizational	A basic standard of occupational hygiene is recommended. Ensure operatives are well informed of the hazards and trained to minimise exposures. Ensure regular inspection and maintenance of equipment and machines. Handle and store according to the indications of the Safety Data Sheet.	
Protection	Eye protection:	Safety glasses
	Skin and body protection:	Wear foot protection
	Respiratory protection:	Self-contained breathing apparatus. [In case of inadequate ventilation] wear respiratory protection.
Engineering controls	Emergency eye wash fountains and safety showers should be available in the immediate vicinity of any potential exposure.Ensure good ventilation of the work station.	
Environment protective measures		
Do not attempt to take action without suitable protective equipment. Exposure controls/personal protection"		

9. First-aid measures

First-aid measures after inhalation :Remove the person to fresh air and keep them comfortable for breathing. Get medical advice/attention if you feel unwell. Call a doctor.

First-aid measures after skin contact:Wash immediately with lots of water. Do not apply (chemical) neutralizing agents without medical advice. Consult a doctor/medical service

GPS Safety Summary

N-Methyl Aniline

CL-4: PUBLIC

First-aid measures after eye contact :Rinse with water. Remove contact lenses, if present and easy to do. Continue rinsing. Do not apply (chemical) neutralizing agents without medical advice.

First-aid measures after ingestion :Rinse mouth with water. Immediately consult a doctor/medical service. Call PoisonInformation Centre (www.big.be/antigif.html). Ingestion of large quantities: immediately to hospital. Take the container/vomit to the doctor/hospital.

10. Fire-fighting measures

Extinguishing media

Suitable extinguishing media : Quick-acting ABC powder extinguisher. Class A foam extinguisher. Water (quick-acting extinguisher, reel). Water. Carbon dioxide.

Unsuitable extinguishing media: Quick-acting BC powder extinguisher.

Hazardous decomposition products in case of fire :On heating/burning: release of toxic and corrosive gases/vapours (nitrous vapours, carbon monoxide - carbon dioxide).

Precautionary measures fire:Exposure to fire/heat: keep upwind. Exposure to fire/heat: consider evacuation. Exposure to fire/heat: seal off low-lying areas. Exposure to fire/heat: have neighbourhood close doors and windows.

Firefighting instructions :Cool tanks/drums with water spray/remove them into safety. Dilute toxic gases with water spray. Take account of toxic/corrosive precipitation water. Take account of toxic fire-fighting water. Use water moderately and if possible collect or contain it.

11. Accidental release measures

Protective equipment : Gloves. Protective clothing. Safety glasses. Wear recommended personal protection.

Emergency procedures:Ventilate spillage area. Do not breathe dust/fume/gas/mist/vapors/spray. Avoid contact with skin, eyes and clothing.

For containment:Contain released product, collect/pump into suitable containers. Plug the leak, cut off the supply. Dam up the solid spill. Knock down/dilute dust clouds with water spray. Take account of toxic/corrosive precipitation water. Provide equipment/receptacles with earthing. Powdered form: no compressed air for pumping over spills.

12. Disposal consideration

Regional legislation (waste) : Disposal must be done according to official regulations.

Waste treatment methods:Dispose of contents/container in accordance with licensed collector's sorting instructions.

Sewage disposal recommendations:Disposal must be done according to official regulations.

GPS Safety Summary

N-Methyl Aniline

CL-4: PUBLIC

13. Handling and storage

Precautions for safe handling: Do not breathe dust/fume/gas/mist/vapors/spray. Do not get in eyes, on skin, or on clothing. Wear personal protective equipment. Use only outdoors or in a well-ventilated area.

Hygiene measures : Wash contaminated clothing before reuse. Do not eat, drink or smoke when using this product.

14. Classification and Labeling

Hazard pictograms (GHS US)



Signal word (GHS US)

: Danger

Hazard statements (GHS US)

: H301+H311+H331 - Toxic if swallowed, in contact with skin or if inhaled
H373 - May cause damage to organs through prolonged or repeated exposure

Precautionary statements (GHS US)

: P260 - Do not breathe dust/fume/gas/mist/vapors/spray.
P261 - Avoid breathing dust/fume/gas/mist/vapors/spray.
P264 - Wash hands, forearms and face thoroughly after handling.
P270 - Do not eat, drink or smoke when using this product.
P271 - Use only outdoors or in a well-ventilated area.
P280 - Wear protective clothing, eye protection, face protection, protective gloves.
P301+P310 - If swallowed: Immediately call a poison center or doctor.
P302+P352 - If on skin: Wash with plenty of water.
P304+P340 - If inhaled: Remove person to fresh air and keep comfortable for breathing.
P311 - Call a poison center or doctor.
P312 - Call a poison center or doctor if you feel unwell.
P314 - Get medical advice/attention if you feel unwell.
P321 - Specific treatment (see supplemental first aid instruction on this label).
P322 - Specific treatment (see supplemental first aid instruction on this label)
P330 - Rinse mouth.
P361+P364 - Take off immediately all contaminated clothing and wash it before reuse.
P403+P233 - Store in a well-ventilated place. Keep container tightly closed.
P405 - Store locked up.
P501 - Dispose of contents/container to hazardous or special waste collection point, in accordance with local, regional, national and/or international regulation.

15. Conclusion

N-Methyl Aniline is a light yellow to yellow-green liquid. Combustible substance, poorly flammable. Very slightly soluble in water. Sensitive to air. Steam-distillable. Acute or chronic health hazards result from the substance. The substance is hazardous to the aquatic environment. This is a common intermediate in the production. N-Methyl Aniline is rapidly absorbed via skin, gastrointestinal tract or respiratory tract. It is suspected of causing genetic defects & causing cancer. Care should be taken to avoid releases of these products to sewage, drainage systems and water bodies. Spillage shall be quickly collected in the event of an accidental release. More information about release measures and accidental release measures are available in the extended safety data sheet.

16. Contact Information within company

GPS Safety Summary

N-Methyl Aniline

CL-4: PUBLIC

Manufacturer

Aarti Industries Limited

Udyog Kshetra, 2nd Floor, Mulund Goregaon Link Road, Mulund (West)

400080 Mumbai - India

T +91-22-6797-6666 - F +91-22-2565 3234

info@aarti-industries.com - www.aarti-industries.com

This GPS safety summary is intended to give general information about the health, safety and environmental and not intended to provide in-depth details. To obtain the most accurate and current information, consult the appropriate Safety Data Sheet (SDS) prior to use of the material named herein.