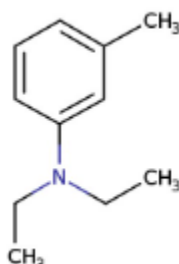


### 1. General Statements

N,N Di Ethyl Meta Toluidine is Brown-Orange to Yellow liquid. It is a Combustible substance, poorly flammable. Slightly soluble in water. Low or very low-volatile. Acute or chronic health hazards result from the substance. The substance is hazardous to the aquatic environment.

### 2. Chemical identification.

Name : N,N Di Ethyl Meta Toluidine  
 CAS number(s) : 91-67-8  
 EC number : 202-089-3  
 Molecular formula : C<sub>11</sub>H<sub>17</sub>N  
 Structure :



### 3. Uses and Benefits

It is used as an intermediate; in organic syntheses..

### 4. Physical / chemical properties

Property	Value
Physical state :	Liquid
Colour :	Brown-Orange to Yellow
Odour :	Odourless
pH :	NA
Melting point :	-17 °C
Boiling point :	231.5 °C
Flash point :	> 110 °C
Density :	0.922 g/cm <sup>3</sup> (20 °C)
Solubility in Water:	Poorly soluble in water.

**GPS Safety Summary**  
**N,N Di Ethyl Meta Toluidine**  
**CL-4:PUBLIC**

---

**5. Health Effects**

Effect Assessment	Result
Acute toxicity (Oral / inhalation / dermal )	Harmful if swallowed, in contact with skin or if inhaled
Irritation / corrosion Skin / eye/ respiratory tract	NA
Respiratory or skin sensitisation	NA
Toxicity after repeated exposure Oral / inhalation / dermal	NA
Genotoxicity / Mutagenicity	NA
Carcinogenicity	NA
Toxicity for reproduction	NA

**6. Environmental Effects**

Effect Assessment	Result
Aquatic toxicity	Yes
Fate and behavior	Result
Persistence and degradability	No additional information available
Bioaccumulative potential	No additional information available

**7. Exposure**

**Human health**

N,N Di Ethyl Meta Toluidine is toxic if swallowed, is toxic in contact with skin, is toxic if inhaled and is toxic to aquatic life with long lasting effects. The exposure must be kept as minimum as possible by the use of appropriate risk management measures suitable collective and personal protective equipment, good industrial hygiene practices and risk communication through appropriate training of workers. Careless handling or accidental spillage of the chemical could result in exposure to potentially hazardous levels of chemicals. Industrial workers should ensure that they follow the advice found in the extended safety data sheet (SDS).

**Environment**

Care should be taken to avoid releases of these products to sewage, drainage systems and water bodies. Spillage shall be quickly collected in the event of an accidental release. More information about release measures and accidental release measures are available in the extended safety data sheet.

## **8. Risk Management Recommendations**

### **Human health measures**

Organizational	A basic standard of occupational hygiene is recommended. Ensure operatives are well informed of the hazards and trained to minimise exposures. Ensure regular inspection and maintenance of equipment and machines. Handle and store according to the indications of the Safety Data Sheet.	
Protection	Eye protection:	Safety glasses
	Skin and body protection:	Wear suitable protective clothing
	Respiratory protection:	Wear respiratory protection.
Engineering controls	Ensure good ventilation of the work station.	
Environment protective measures		
Avoid release to the environment		

## **9. First-aid measures**

**First-aid measures after inhalation:**Remove the person to fresh air and keep them comfortable for breathing. Call a poison center or a doctor if you feel unwell.

**First-aid measures after skin contact::**Wash skin with plenty of water. Take off contaminated clothing.

**First-aid measures after eye contact:**Rinse eyes with water as a precaution.

**First-aid measures after ingestion :**Rinse mouth. Call a poison center or a doctor if you feel unwell.

## **10. Fire-fighting measures**

### **Extinguishing media**

**Suitable extinguishing media:**Water spray. Dry powder. Foam. Carbon dioxide.

**Unsuitable extinguishing media :**Water (quick-acting extinguisher, reel); risk of puddle expansion. Water; risk of puddle expansion.

### **Special hazards arising from the substance or mixture**

**Hazardous decomposition products in case of fire:**Toxic fumes may be released.

# GPS Safety Summary

## N,N Di Ethyl Meta Toluidine

CL-4:PUBLIC

---

### Advice for firefighters

**Precautionary measures fire:** B liquid or melting substances.

**Firefighting instructions:** Areas in which the substance is heated to above its flash point and processed are areas of fire hazard. Keep away from open flames. Welding only under supervision

### 11. Accidental release measures

**Protective equipment :** wear a suitable protective clothing or a suitable chemical protection suit. Use protective gloves. In the case of a fire hazardous substances can be released. Nitrous gases (nitric oxides) Carbon monoxide and carbon dioxide. Wear self-contained breathing apparatus and special tightly sealed suit.

**Environmental precautions:** Avoid release to the environment.

**For containment :** Take up liquid spill into absorbent material. Dispose of materials or solid residues at an authorized site.

### 12. Disposal consideration

**Regional legislation (waste) :** Disposal must be done according to official regulations.

**Waste treatment methods :** Dispose of contents/container in accordance with licensed collector's sorting instructions.

**Sewage disposal recommendations :** Disposal must be done according to official regulations.

### 13. Handling and storage

**Precautions for safe handling: :** Do not get in eyes, on skin, or on clothing. Wear personal protective equipment. Use only outdoors or in a well-ventilated area. Avoid breathing dust/fume/gas/mist/vapors/spray.

**Hygiene measures :** Wash contaminated clothing before reuse. Do not eat, drink or smoke when using this product. Always wash hands after handling the product.

# GPS Safety Summary

## N,N Di Ethyl Meta Toluidine

CL-4:PUBLIC

---

### 14. Classification and Labeling

Hazard pictograms (GHS US)

:



Signal word (GHS US)

Hazard statements (GHS US)

Precautionary statements (GHS US)

: Warning

: H302+H312+H332 - Harmful if swallowed, in contact with skin or if inhaled

: P261 - Avoid breathing dust/fume/gas/mist/vapors/spray.

P264 - Wash hands, forearms and face thoroughly after handling.

P270 - Do not eat, drink or smoke when using this product.

P271 - Use only outdoors or in a well-ventilated area.

P280 - Wear protective gloves/protective clothing/eye protection/face protection.

P301+P312 - If swallowed: Call a poison center or doctor if you feel unwell.

P302+P352 - If on skin: Wash with plenty of water.

P304+P340 - If inhaled: Remove person to fresh air and keep comfortable for breathing.

P312 - Call a poison center or doctor if you feel unwell.

P322 - Specific treatment (see supplemental first aid instruction on this label)

P330 - Rinse mouth.

P362+P364 - Take off contaminated clothing and wash it before reuse.

P501 - Dispose of contents/container to hazardous or special waste collection point, in accordance with local, regional, national and/or international regulation.

### 15. Conclusion

N,N Di Ethyl Meta Toluidine is Brown-Orange to Yellow liquid. It is a Combustible substance, poorly flammable. Slightly soluble in water. Low or very low-volatile. Acute or chronic health hazards result from the substance. The substance is hazardous to the aquatic environment. Care should be taken to avoid releases of these products to sewage, drainage systems and water bodies. The exposure must be kept as minimum as possible by the use of appropriate risk management measures as suitable collective and personal protective equipment, good industrial hygiene practices and risk communication through appropriate training of workers.

### 16. Contact Information within company

#### **Manufacturer**

Aarti Industries Limited

Udyog Kshetra, 2nd Floor, Mulund Goregaon Link Road, Mulund (West)

400080 Mumbai - India

T +91-22-6797-6666 - F +91-22-2565 3234

info@aarti-industries.com - www.aarti-industries.com

This GPS safety summary is intended to give general information about the health, safety and environment and not intended to provide in-depth details. To obtain the most accurate and current information, consult the appropriate Safety Data Sheet (SDS) prior to use of the material named herein.