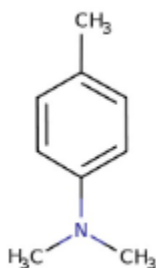


### 1. General Statements

N,N - Dimethyl Para-Toluidine is an oily liquid which is an disagreeable odour. It is a combustible substance, poorly flammable (flash point > 60 up to 93 °C). Vapours may form explosive mixtures with air when the substance is heated above its flash point. Very slightly soluble in water. Acute or chronic health hazards result from the substance.

### 2. Chemical identification.

Name : N,N - Dimethyl Para-Toluidine  
 CAS number(s) : 99-97-8  
 EC number : 202-805-4  
 Molecular formula : C<sub>9</sub>H<sub>13</sub>N  
 Structure :



### 3. Uses and Benefits

This substance has a use in hairdressing, dentistry and adhesives industries.

### 4. Physical / chemical properties

Property	Value
Physical state :	Liquid
Colour :	Brown
Odour :	Disagreeable odour
pH :	7.44 at 25 °C
Melting point :	-15 °C.
Boiling point :	211.2 °C Atm. press.: 965 hPa Decomposition: 'no'
Flash point :	87 °C Atm. press.: 965 hPa
Density :	0.88 g/cm <sup>3</sup> Type: 'bulk density' Temp.: 35 °C
Solubility in Water:	650 mg/L at 37 °C

## GPS Safety Summary

### N,N - Dimethyl Para-Toluidine

CL-4:PUBLIC

#### 5. Health Effects

Effect Assessment	Result
Acute toxicity (Oral / inhalation / dermal )	Fatal if inhaled
Irritation / corrosion Skin / eye/ respiratory tract	NA
Respiratory or skin sensitisation	NA
Toxicity after repeated exposure Oral / inhalation / dermal	NA
Genotoxicity / Mutagenicity	Suspected of damaging fertility or the unborn child
Carcinogenicity	It may cause cancer.
Toxicity for reproduction	NA

#### 6. Environmental Effects

Effect Assessment	Result
Aquatic toxicity	Yes
Fate and behavior	Result
Persistence and degradability	Not rapidly degradable
Bioaccumulative potential	No additional information available.

#### 7. Exposure

##### Human health

N,N - Dimethyl Para-Toluidine is Fatal if inhaled. Suspected of damaging fertility or the unborn child. It may cause cancer. The exposure must be kept as minimum as possible by the use of appropriate risk management measures suitable collective and personal protective equipment, good industrial hygiene practices and risk communication through appropriate training of workers. Careless handling or accidental spillage of the chemical could result in exposure to potentially hazardous levels of chemicals. Industrial workers should ensure that they follow the advice found in the extended safety data sheet (SDS).

##### Environment:

Care should be taken to avoid releases of these products to sewage, drainage systems and water bodies. Spillage shall be quickly collected in the event of an accidental release. More information about release measures and accidental release measures are available in the extended safety data sheet.

# GPS Safety Summary

## N,N - Dimethyl Para-Toluidine

CL-4:PUBLIC

### 8. Risk Management Recommendations

#### Human health measures

Organizational	A basic standard of occupational hygiene is recommended. Ensure operatives are well informed of the hazards and trained to minimise exposures. Ensure regular inspection and maintenance of equipment and machines. Handle and store according to the indications of the Safety Data Sheet.	
Protection	Eye protection:	Safety glasses
	Skin and body protection:	Wear suitable protective clothing
	Respiratory protection:	[In case of inadequate ventilation] wear respiratory protection.
Engineering Controls	Ensure good ventilation of the work station.	
Environment protective measures		
Avoid release to the environment		

### 9. First-aid measures

**First-aid measures after inhalation:** Remove the person to fresh air and keep them comfortable for breathing. Call a physician immediately.

**First-aid measures after skin contact:** Wash skin with plenty of water. Remove/Take off immediately all contaminated clothing.

**First-aid measures after eye contact:** Rinse eyes with water as a precaution.

**First-aid measures after ingestion :** Rinse mouth. Call a physician immediately.

### 10. Fire-fighting measures

#### Extinguishing media

**Suitable extinguishing media:** Water spray. Dry powder. Foam. Carbon dioxide.

**Unsuitable extinguishing media :** Do not use a heavy water stream.

#### Special hazards arising from the substance or mixture

**Hazardous decomposition products in case of fire:** Toxic fumes may be released.

# GPS Safety Summary

## N,N - Dimethyl Para-Toluidine

CL-4:PUBLIC

---

### Advice for firefighters

**Precautionary measures fire:** Exposure to fire/heat: keep upwind. Exposure to fire/heat: consider evacuation. Exposure to fire/heat: seal off low-lying areas. Exposure to fire/heat: have neighbourhood close doors and windows.

**Firefighting instructions:** Fight fire from safe distance and protected location. Do not enter a fire area without proper protective equipment, including respiratory protection.

### 11. Accidental release measures

**Protective equipment :** Gloves. Protective clothing. Safety glasses. Wear recommended personal protective equipment.

**Environmental precautions:** Avoid release to the environment. Notify authorities if a product enters sewers or public waters.

**For containment :** Absorb spilled material with sand or earth. Contain any spills with dikes or absorbents to prevent migration and entry into sewers or streams. Stop leaks without risks if possible.

### 12. Disposal consideration

**Regional legislation (waste) :** Disposal must be done according to official regulations.

**Waste treatment methods :** Dispose of contents/container in accordance with licensed collector's sorting instructions.

**Sewage disposal recommendations :** Disposal must be done according to official regulations.

### 13. Handling and storage

**Precautions for safe handling:** Ensure good ventilation of the work station. Obtain special instructions before use. Do not handle it until all safety precautions have been read and understood. Take all necessary technical measures to avoid or minimize the release of the product in the workplace. Limit quantities of product at the minimum necessary for handling and limit the number of exposed workers. Provide local exhaust or general room ventilation. Wear personal protective equipment. Floors, walls and other surfaces in the hazard area must be cleaned regularly. Do not breathe dust/fume/gas/mist/vapors/spray. Do not get in eyes, on skin, or on clothing.

**Hygiene measures:** Separate working clothes from town clothes. Launder separately. Wash contaminated clothing before reuse. Contaminated work clothing should not be allowed out of the workplace. Do not eat, drink or smoke when using this product. Always wash hands after handling the product.

# GPS Safety Summary

## N,N - Dimethyl Para-Toluidine

CL-4:PUBLIC

---

### 14. Classification and Labeling

Hazard pictograms (GHS US)	:	
Signal word (GHS US)	:	Danger
Hazard statements (GHS US)	:	H330 - Fatal if inhaled H350 - May cause cancer. H361 - Suspected of damaging fertility or the unborn child H412 - Harmful to aquatic life with long lasting effects
Precautionary statements (GHS US)	:	P201 - Obtain special instructions before use. P202 - Do not handle until all safety precautions have been read and understood. P260 - Do not breathe dust, fume, gas, mist, spray, vapors. P271 - Use only outdoors or in a well-ventilated area. P273 - Avoid release to the environment. P280 - Wear protective gloves, protective clothing, eye and face protection. P284 - Wear respiratory protection. P304+P340 - If inhaled: Remove person to fresh air and keep comfortable for breathing. P308+P313 - If exposed or concerned: Get medical advice/attention. P310 - Immediately call a POISON CENTER, a doctor. P320 - Specific treatment is urgent (see supplemental first aid instruction on this label). P403+P233 - Store in a well-ventilated place. Keep container tightly closed. P405 - Store locked up. P501 - Dispose of hazardous or special waste collection point, in accordance with local, regional, national and/or international regulation to hazardous or special waste collection point, in accordance with local, regional, national and/or international regulations.

### 15. Conclusion

N,N - Dimethyl Para-Toluidine is an oily liquid which is a disagreeable odour. It is a combustible substance, poorly flammable (flash point > 60 up to 93 °C). Vapours may form explosive mixtures with air when the substance is heated above its flash point. Very slightly soluble in water. Acute or chronic health hazards result from the substance. N,N - Dimethyl Para-Toluidine is Fatal if inhaled. Suspected of damaging fertility or the unborn child. It may cause cancer. The substance can react dangerously with: strong oxidizing agents nitric acid. The exposure must be kept as minimum as possible by the use of appropriate risk management measures as suitable collective and personal protective equipment, good industrial hygiene practices and risk communication through appropriate training of workers.

### 16. Contact Information within company

#### Manufacturer

Aarti Industries Limited  
Udyog Kshetra, 2nd Floor, Mulund Goregaon Link Road, Mulund (West)  
400080 Mumbai - India  
T +91-22-6797-6666 - F +91-22-2565 3234  
info@aarti-industries.com - www.aarti-industries.com

## **GPS Safety Summary**

### **N,N - Dimethyl Para-Toluidine**

**CL-4:PUBLIC**

---

This GPS safety summary is intended to give general information about the health, safety and environment and not intended to provide in-depth details. To obtain the most accurate and current information, consult the appropriate Safety Data Sheet (SDS) prior to use of the material named herein.